



# TROPHY BAY

FISHING RESORT  
PANAMA

*PANAMA*



FISHING RESORT

# The Project

AN EXCLUSIVE  
DEVELOPMENT

04

---

# Destination

A MARINE PARADISE  
IN PANAMA'S PACIFIC COAST

16

---

# Panama

PANAMA:  
AN INVESTMENT  
DESTINATION

20

---

# Our Compromise

CONSERVATION BY DESIGN  
SUSTAINABLE LEGACY FOR  
FUTURE GENERATIONS

24



# The Project

TROPHY BAY

PANAMA

CHIRIQUI  
GULF



*The images and sales plans are architectural representations of the project and may be subject to changes without prior notice.*

Trophy Bay is a world-class destination that redefines the fishing paradise, where the thrill of catching marlin, sailfish, dorado, and tuna merges with a deep respect for nature. This exclusive development spans 14 hectares of breathtaking natural beauty and offers approximately 75 residential units, including luxury apartments and villas designed for comfort and style.

At the heart of Trophy Bay lies a state-of-the-art marina with 60 boat slips, accommodating vessels ranging from 45 to 160 feet. This marina provides direct access to abundant waters teeming with marine life. Residents and visitors can take full advantage of the project's premier amenities, including recreational areas and a thoughtfully designed environment that celebrates both fishing and nature.



*The images and sales plans are architectural representations of the project and may be subject to changes without prior notice.*



*The images and sales plans are architectural representations of the project and may be subject to changes without prior notice.*

# Garden Villa

TROPHY BAY  
PANAMA



*The images and sales plans are architectural representations of the project and may be subject to changes without prior notice.*

GARDEN VILLA  
GENERAL



*The images and sales plans are architectural representations of the project and may be subject to changes without prior notice.*

GARDEN VILLA  
ZONA SOCIAL

/10



*The images and sales plans are architectural representations of the project and may be subject to changes without prior notice.*

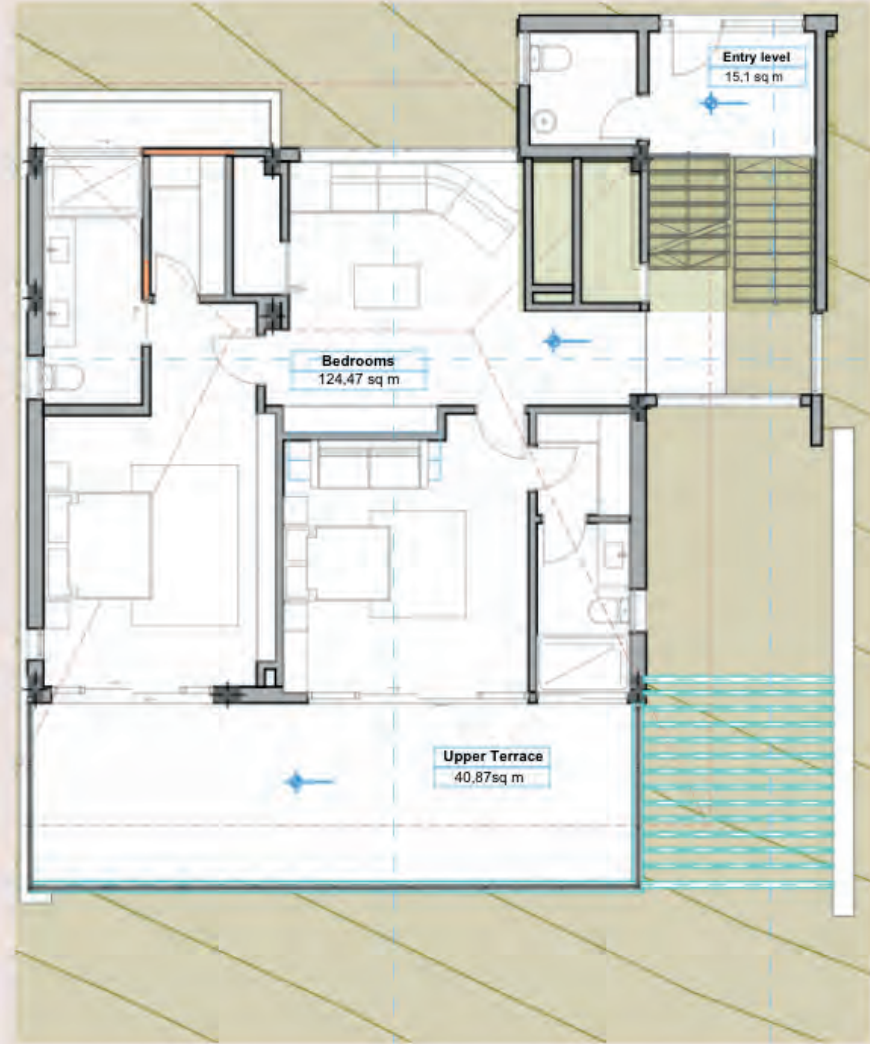
GARDEN VILLA  
ZONA SOCIAL INTERIOR

# Garden Villa

ACCESSIBILITY



ROOMS



Renderings and floor plans are conceptual and may vary as design is finalized.

# Garden Villa Phase 1

- 7 Waterfront Villas
- 3-bedroom layout
- Generous lot sizes from 656 m<sup>2</sup> to 2,236 m<sup>2</sup>
- Residential buildings with 14 residences
- Marina with 10 slips (limited ownership opportunities)





*The images and sales plans are architectural representations of the project and may be subject to changes without prior notice.*

# Luxury Condo

TROPHY BAY  
PANAMA



*The images and sales plans are architectural representations of the project and may be subject to changes without prior notice.*



*The images and sales plans are architectural representations of the project and may be subject to changes without prior notice.*



# The Destination

TROPHY BAY

PANAMA

CHIRIQUI  
GULF



BOCAS DEL TORO

SAN BLAS ISLANDS

PANAMA CITY

BOQUETE

DAVID



LOS SUEÑOS

~215nM

ISLAS SECAS

COIBA ISLAND

~30nM

HANNIBAL BANK

~49nM


PEARL ISLAND ARCHIPELAGO

~150nM

PLAYA VENAO

PIÑAS BAY

~210nM



A marine  
paradise  
in Panama's  
Pacific coast

TROPHY BAY

PANAMA



*LOCATION*

—  
CHIRIQUI  
GULF  
—



—  
FISHING  
RESORT  
—

Nestled in the pristine Gulf of Chiriqui, Trophy Bay is the ultimate destination for trophy fishing. With direct access to Hannibal Bank and Coiba National Park, it draws anglers from around the world. Not only is it known for its unparalleled natural beauty, but its accessibility makes it a standout choice. Just under an hour from Enrique Malek International Airport in Chiriqui and only four hours from Panama City, Trophy Bay is one of the most accessible and exclusive projects in the region.

/19

Residents and visitors of Trophy Bay can enjoy an array of nearby natural attractions. Whether it's diving and snorkeling around Coiba Island, exploring coffee ecotourism in Boquete, hiking the Chiriqui Pyramid, surfing at Morro Negro, or enjoying water sports like stand-up paddleboarding and snorkeling at nearby beaches, there is something for everyone.

# Why Panama?

/20

Panama is a land of striking contrasts — where lush jungles, pristine beaches, and a modern, history-rich city coexist. Its strategic location, paired with a stable, dollarized economy, makes it an attractive and secure environment for forward-thinking investors. With a high quality of life at a low cost, a multicultural population, and a booming real estate market, Panama is a gateway to global markets and a thriving investment hub.

---







---

WHERE GLOBAL  
ACCESS MEETS  
LASTING STABILITY

---

*PANAMA*





Our

Compromise

TROPHY BAY

PANAMA

CHIRIQUI  
GULF



*SUSTAINABILITY*

—  
CHIRIQUI  
GULF  
—



—  
FISHING  
RESORT  
—

Trophy Bay is not just a place to live but a commitment to sustainability and conservation, where the unique connection between the sea and those who respect it is celebrated daily. We promote best practices that create a balance between human activity and nature, integrating ecological processes such as solar energy generation, responsible waste management, and water recycling. Additionally, we focus on mangrove conservation, collaborating with experts to ensure a healthy environment. Through these initiatives, we aim to create a space that respects and protects the natural richness of our location, ensuring a sustainable legacy for future generations.



Mallol Design House, Calle 48 y Calle Uruguay, Bella Vista | +507 6218 2020  
[www.theagencyrepanama.com](http://www.theagencyrepanama.com) | [panama@theagencyre.com](mailto:panama@theagencyre.com)



VALOR  
DEVELOPMENT

maxpro  
PROJECT MANAGEMENT