



Villa Marina

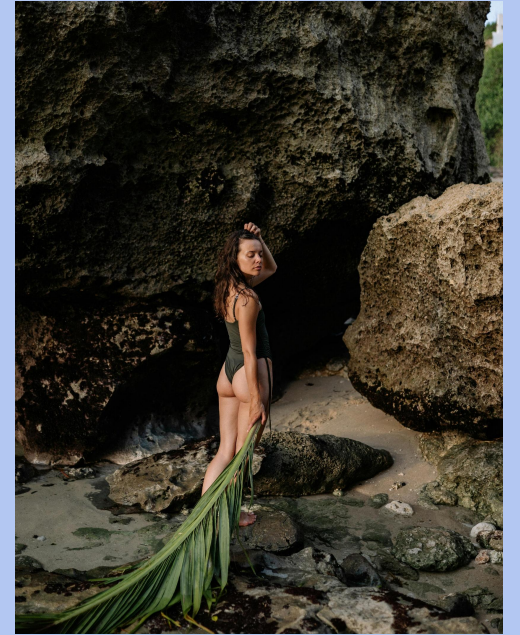
LIVING BY THE OCEAN, PANAMÁ

Villa Marina is a residential space that blends the serenity of Playa Venao's native nature with the sophistication of biophilic design. We offer an environment that prioritizes a deep connection with the landscape, creating an exclusive retreat that revitalizes both body and mind.



Villa Marina

01. About Villa Marina



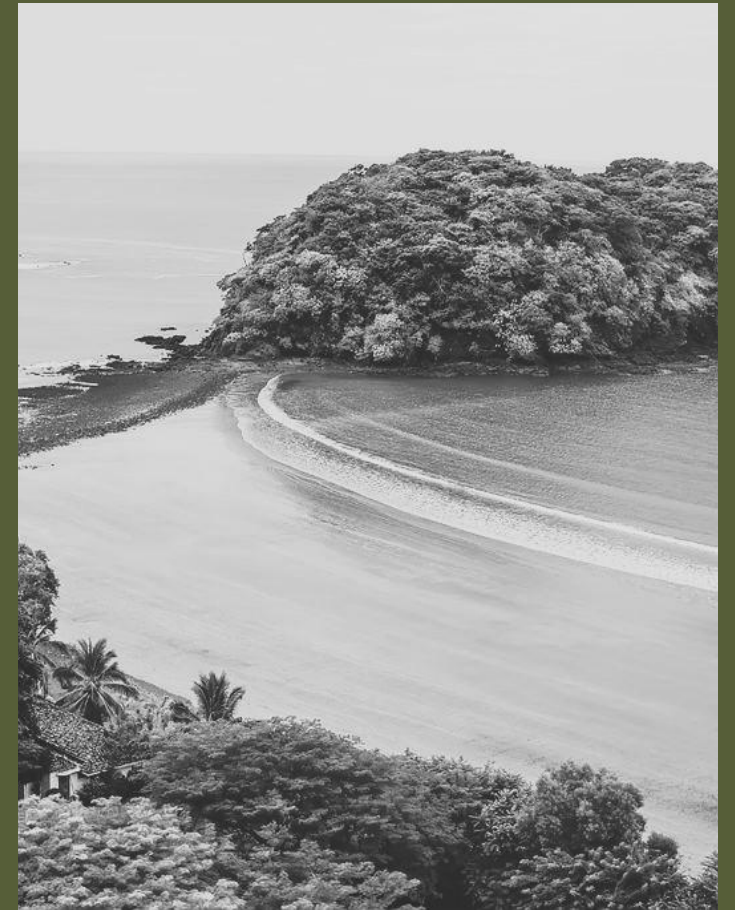
Let yourself be embraced by nature's harmony.

Villa Marina

Villa Marina

Our mission is to provide a place where every space is designed to promote a balanced life, harnessing the restorative power of the natural environment to offer a deep and continuous sense of well-being. We are driven by the desire to reconnect people with their natural surroundings in a way that feels authentic, private, and enriching.

Villa Marina is a space in Playa Venao that fosters physical, mental, and emotional well-being by offering a seaside retreat where guests and residents can unwind and naturally embrace the rhythm of local activities.







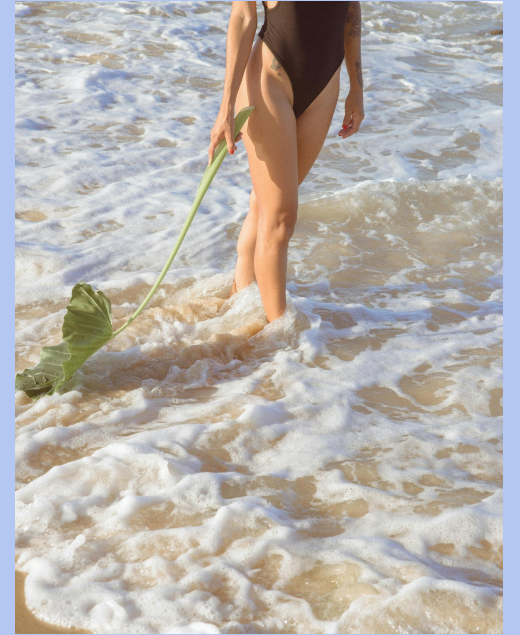
Where living means reconnecting

Villa Marina is an exclusive retreat where every space is surrounded by lush vegetation and areas dedicated to calm and reconnection. Thoughtfully designed to promote a life in harmony with the ecosystem.



Masterplan Villa Marina

- 01. Public Access Road
- 02. Main Entrance
- 03. Security Gate
- 04. Primary Roadway
- 05. Back of House
- 06. Secondary Roadway
- 07. Proposed Lagoons and Waterfalls
- 08. Future Developments
- 09. Hotel
- 10. Wellness Center
- 11. Beach Club
- 12. Villa Marina Existing Apartments
- 13. Garden Single Family Lots
- 14. Hillside Single Family Lots
- 15. Pedestrian and Bicycle Trails
- 16. Surfing Village
- 17. Natural Vegetation
- 18. Beach



02. Hotel & Living

A Panamanian oasis with a unique identity..

Hotel



We connect simplicity with serenity to offer
you an unforgettable stay.

Villa Marina redefines the hospitality experience by creating spaces that enhance well-being and foster an authentic connection with the local environment.



Living



A home where time flows with the rhythm
of nature, allowing you to live in balance
and fulfillment.

Villa Marina

At Villa Marina, experience a home that goes beyond mere living—where every space is designed to foster a deep connection with nature and well-being.





Condos

MASTER PLAN

1. Parking
2. Villa Marina Existing Pool
3. Villa Marina Apartments
4. Main Pool
5. Lawn
6. Beach
7. Existing Vegetation Preserved



Villa Marina

Condos

TOWER 100 & 200

Designed by the renowned firm Zürcher Arquitectos. Located in Venao Beach, Pedasí, adjacent to Villa Marina Lodge Hotel.

2- and 3-bedroom apartments starting at
134 m² / 1,442.36 sq.ft.
Terrace with a peaceful view
Beach access & social area

2 buildings with 4 floors each, with 2 condos per floor
8 apartments of 1,442.36 sq.ft. with 2 bedrooms*.
8 apartments of 1,926.74 sq.ft. with 3 bedrooms*.

Distributed in buildings V01 and V02 just a few steps
from the beach.
Ground-floor apartments will have a patio.

*Appliances are not included.



Condo 101

TOWER 100 – LEVEL 000

Closed Area:

107.04 M2 / 1152.16 SQ.FT.

Covered Outdoor Space:

27.31 M2 / 293.96 SQ.FT.

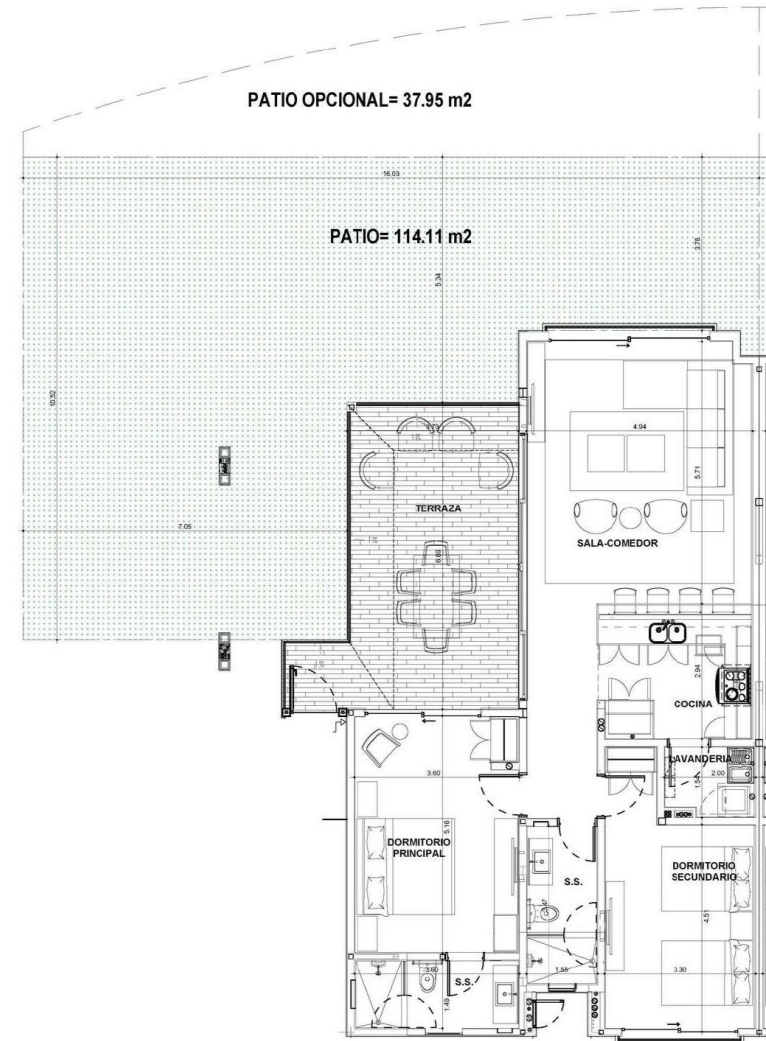
Uncovered Patio:

114.11 M2 / 1128.26 SQ.FT.

Total:

248.46 M2 / 2674.40 SQ.FT.

- 1 Master Bedroom
- 1 Secondary Bedroom
- 2 Bathrooms
- Kitchen
- Living and Dining Room
- Terrace
- Laundry Area
- Patio
- Optional Patio



Condo 102

TOWER 100 – LEVEL 000

Closed Area:

107.04 M2 / 1152.16 SQ.FT.

Covered Outdoor Space:

27.31 M2 / 293.96 SQ.FT.

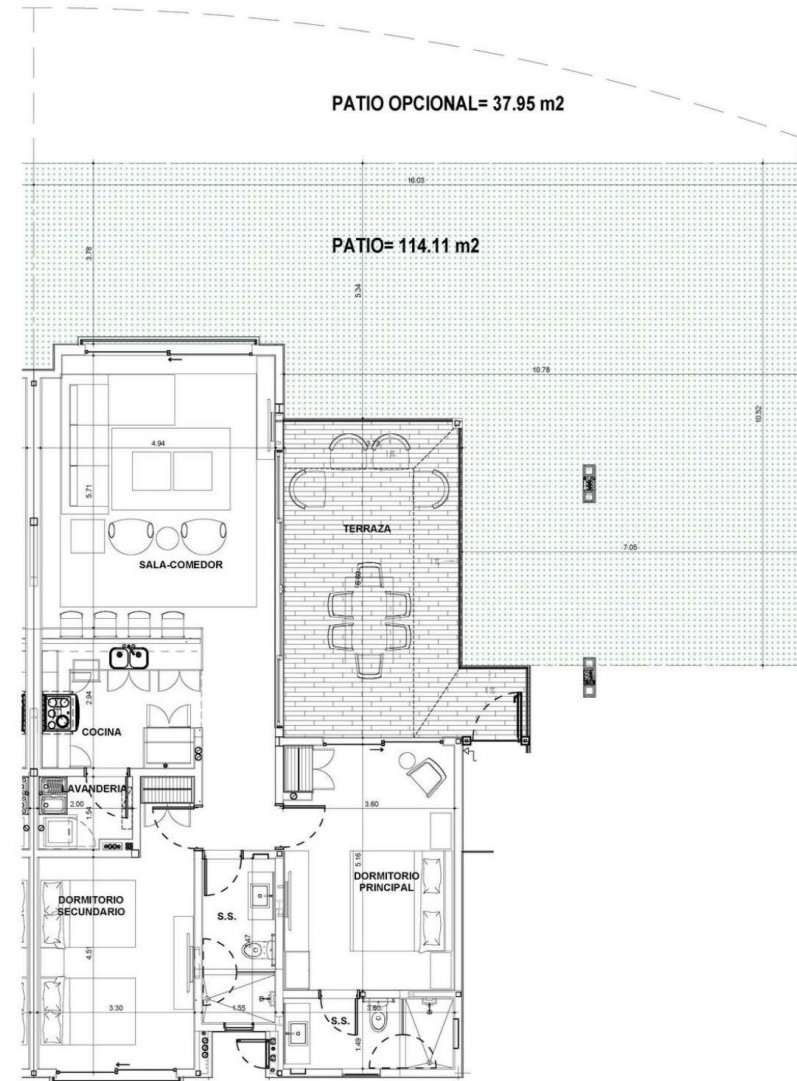
Uncovered Patio:

114.11 M2 / 1128.26 SQ.FT.

Total:

248.46 M2 / 2674.40 SQ.FT.

- 1 Master Bedroom
- 1 Secondary Bedroom
- 2 Bathrooms
- Kitchen
- Living and Dining Room
- Terrace
- Laundry Area
- Patio
- Optional Patio



Condos

TOWER 100 – LEVEL 100 to 300

Closed Area:

107.04 M² / 1152.16 SQ.FT.

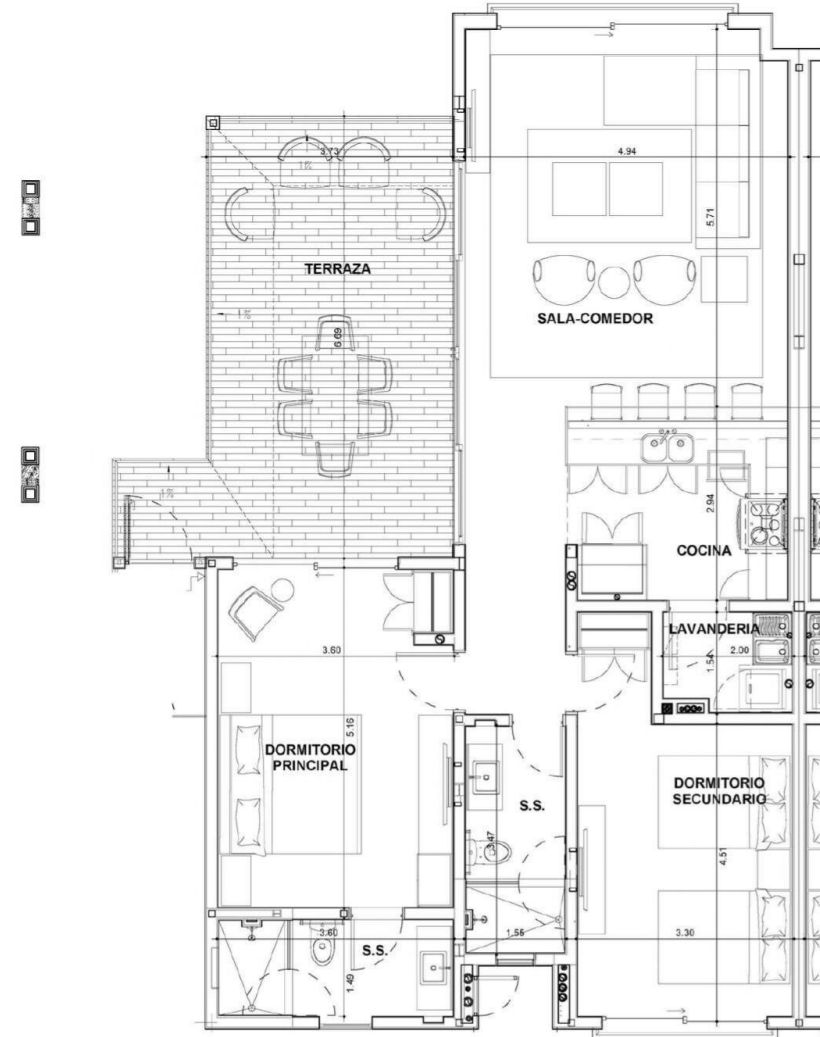
Covered Outdoor Space:

27.31 M² / 293.96 SQ.FT.

Total:

134.35 M² / 1446.13 SQ.FT.

- 1 Master Bedroom
- 1 Secondary Bedroom
- 2 Bathrooms
- Kitchen
- Living and Dining Room
- Terrace
- Laundry Area
- Patio
- Optional Patio



Typical Floor Plan



Condo 201

TOWER 200 – LEVEL 000

Closed Area:

155.65 M2 / 1675.40 SQ.FT.

Covered Outdoor Space:

23.50 M2 / 252.95 SQ.FT.

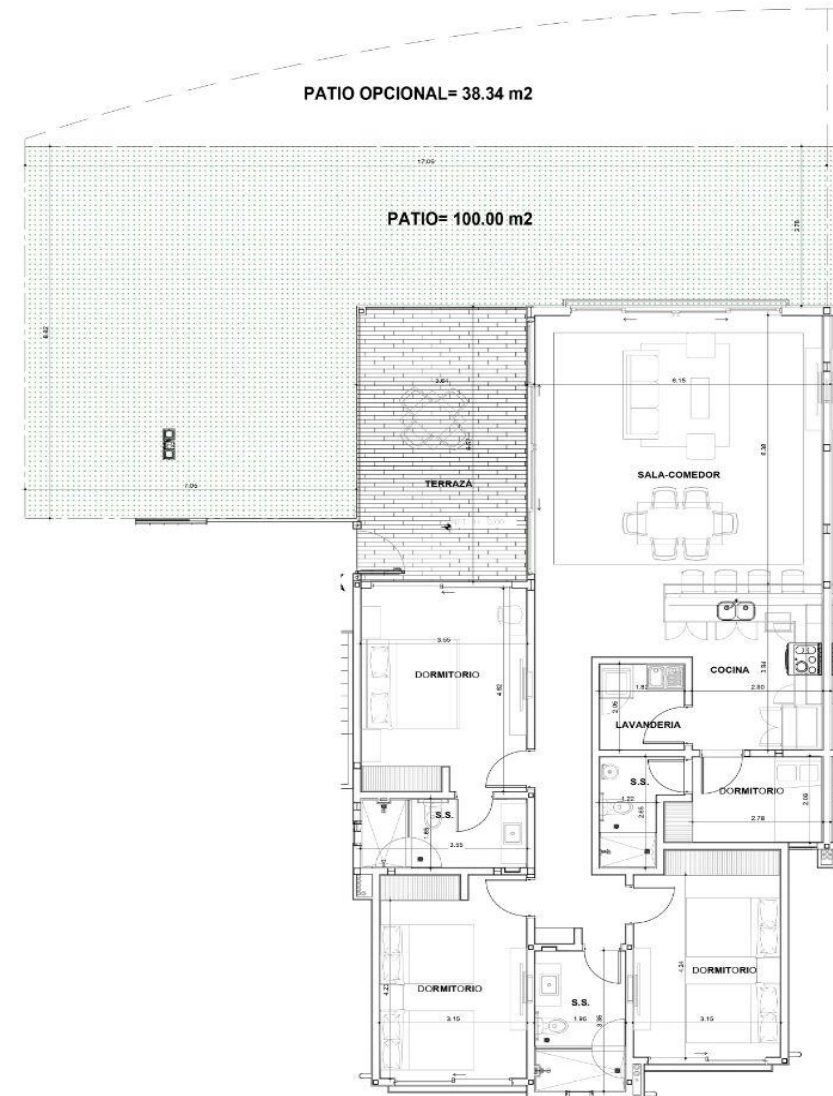
Uncovered Patio:

100.00 M2 / 1076.39 SQ.FT.

Total:

279.15 M2 / 3004.74 SQ.FT.

- 1 Master Bedroom
- 1 Secondary Bedroom
- 2 Bathrooms
- Kitchen
- Living and Dining Room
- Terrace
- Laundry Area
- Patio
- Optional Patio



Condo 202

TOWER 200 – LEVEL 000

Closed Area:

155.65 M2 / 1675.40 SQ.FT.

Covered Outdoor Space:

23.50 M2 / 252.95 SQ.FT.

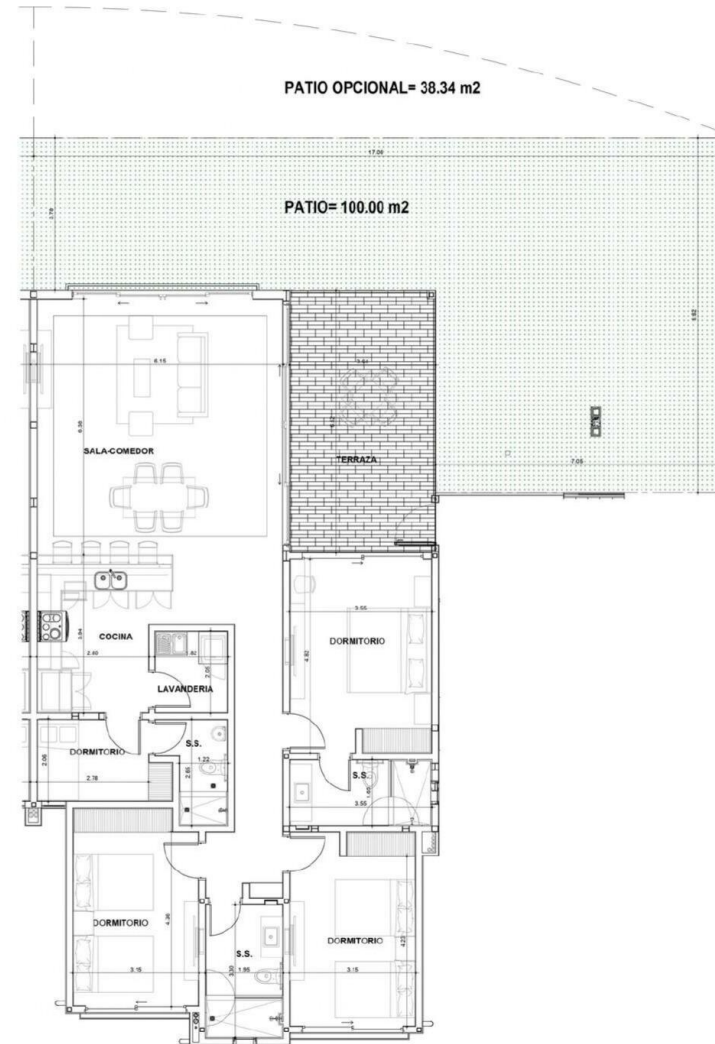
Uncovered Patio:

100.00 M2 / 1076.39 SQ.FT.

Total:

279.15 M2 / 3004.74 SQ.FT.

- 1 Master Bedroom
- 1 Secondary Bedroom
- 2 Bathrooms
- Kitchen
- Living and Dining Room
- Terrace
- Laundry Area
- Patio
- Optional Patio



Condos

TOWER 200 – LEVEL 100 to 300

Closed Area:

155.65 M2 / 1675.40 SQ.FT.

Covered Outdoor Space:

23.50 M2 / 252.95 SQ.FT.

Total:

179.15 M2 / 1928.35 SQ.FT.

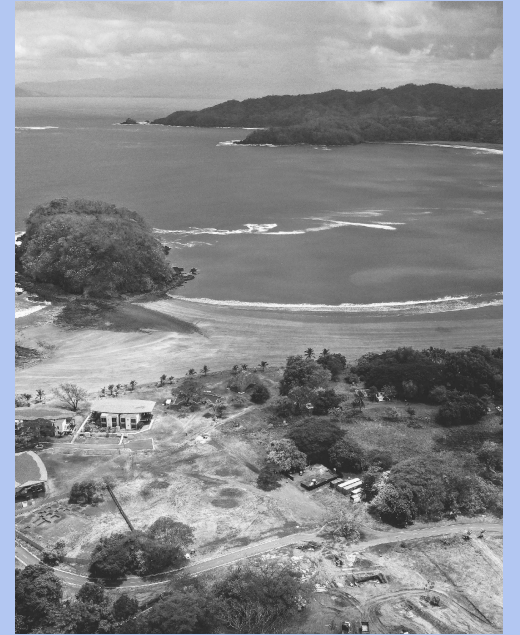
- 1 Master Bedroom
- 1 Secondary Bedroom
- 2 Bathrooms
- Kitchen
- Living and Dining Room
- Terrace
- Laundry Area
- Patio
- Optional Patio



Typical Floor Plan



Villa Marina



03. Playa Venao

The essence of Venao, in the rhythm of calm.

Villa Marina

Playa Venao

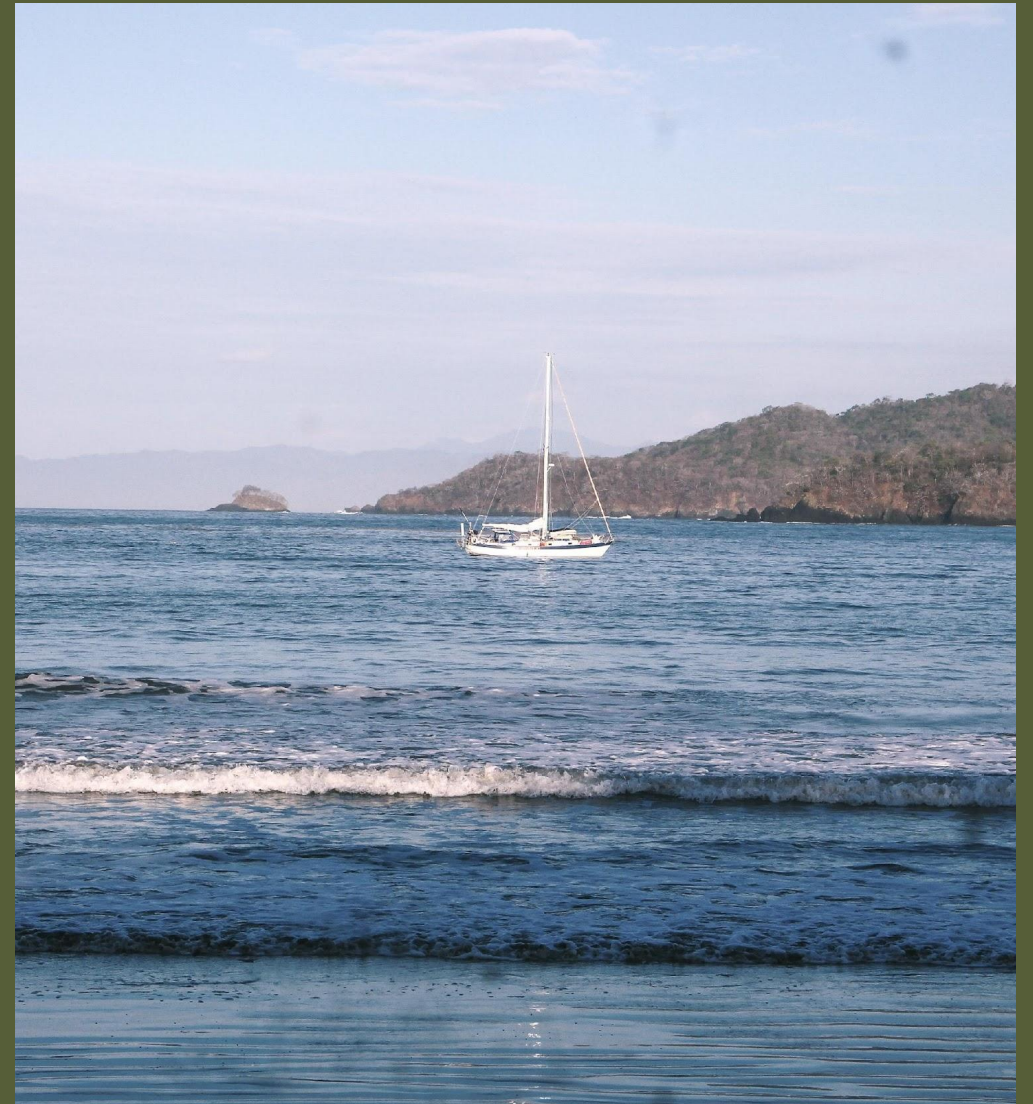
PEDASÍ, PANAMÁ

Villa Marina is an exclusive retreat where every space is surrounded by lush greenery and zones of calm and reconnection. Thoughtfully designed to promote a life in harmony with the ecosystem, the project offers wellness services, recreation, and intimate contact with nature—delivering a symbiotic experience without the distractions of a conventional tourist area.



Here, calm comes with a
local touch.

Playa Venao is both energy and serenity. Located in a growing area, we offer the opportunity to be part of a new lifestyle — one where the tranquility of nature blends seamlessly with a vibrant community life.



Villa Marina

With a privileged location in Playa Venao, Villa Marina offers guests a retreat where nature and design come together to create unforgettable moments.

Restaurants

- 1. Almendros Cafe
- 2. Coleos Cafe
- 3. La quincha Playa Venao
- 4. Pizza Gavilan
- 5. Sol Venao
- 6. Natural Venao

Bars

- 7. Cantina Venao
- 8. Swell Bar

Supermarket

- 9. Alnatural market

Beach

- 10. Playa Venao
- 11. Bahía de achotíne
- 12. Playa madreñoito

Natural Spaces

- 13. Waterfall and Lookout Trail
- 14. Las Escobas Trail

Lifestyle

- 15. Surf dojo
- 16. Beach break Surf camp



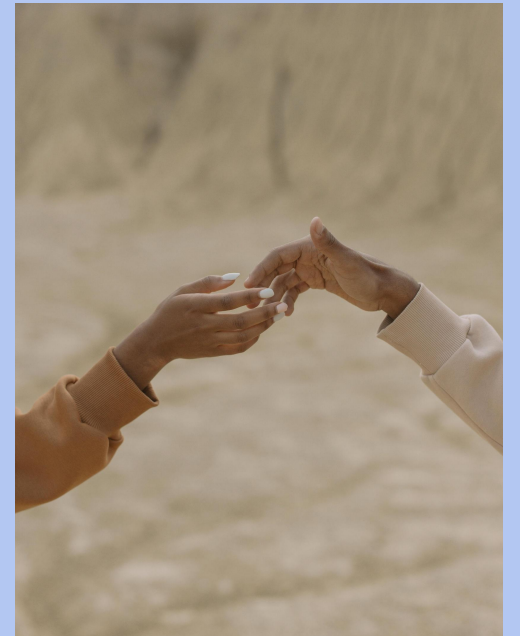
AEROPUERTOS CERCANOS

- Aeropuerto Capitán Alonso Valderra
- Aeropuerto Capitán Justiniano Montenegro

Immerse yourself in the tranquility of a seaside
oasis, where every moment invites you to
reconnect with yourself.



05. Partners



A project designed to enrich your experience.

Grupo Verde Azul, a Panamenian company with years of experience, is committed to creating safe and reliable spaces for families and individuals seeking unique and meaningful experiences.





We focus on privacy and serenity,
designing spaces that inspire
peace and a genuine connection
with the surrounding landscape.

WhatsApp Us



Mallol Design House, Calle 48 y Calle Uruguay, Bella Vista | +507.6218.2020
www.TheAgencyREPanama.com | Panama@TheAgencyRE.com

Email Us

