

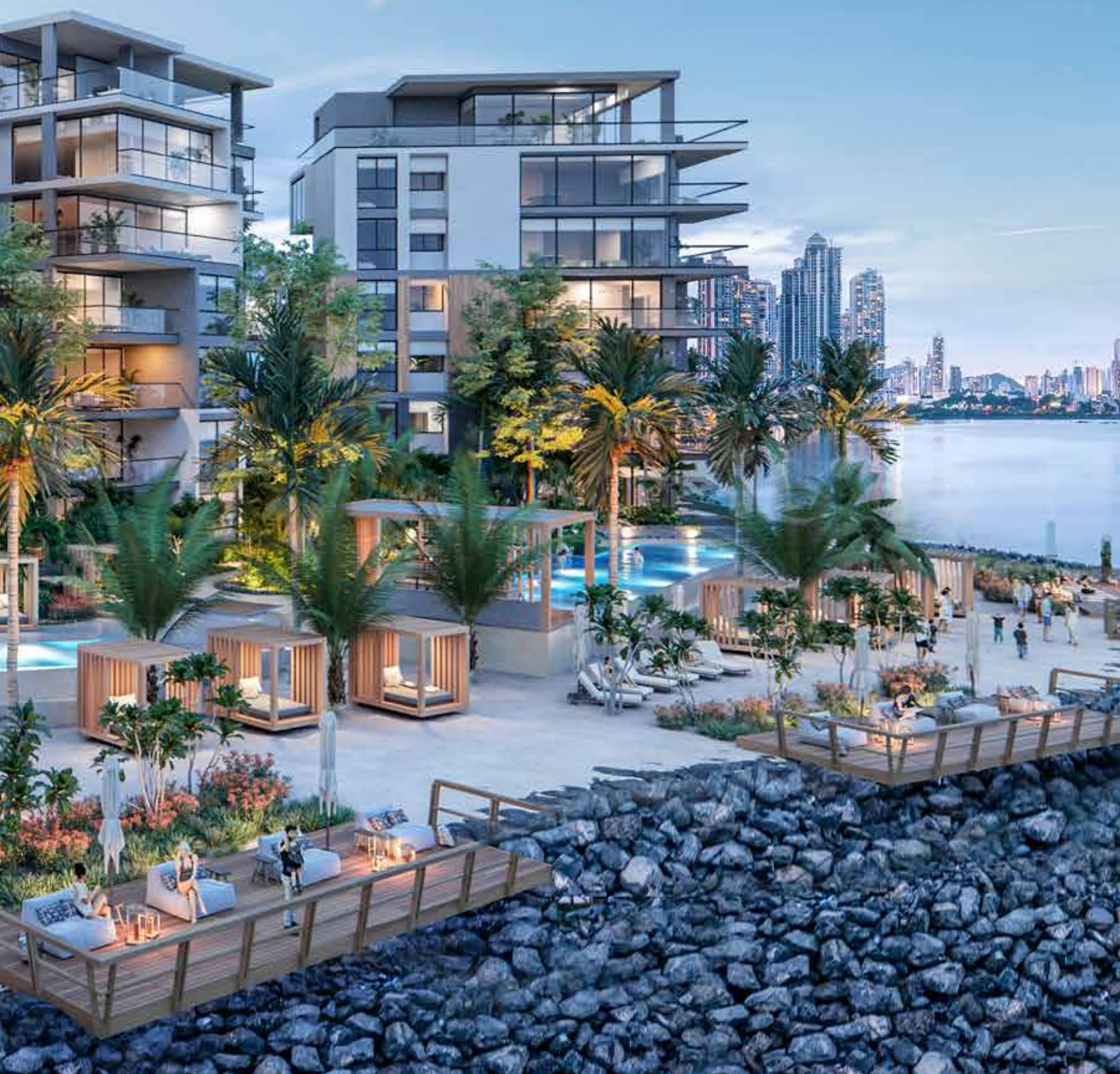
# FLOORPLANS

Phase 1



# THE PALMS BEACH RESORT

OCEAN REEF ISLANDS



# A PRIVATE RESORT IN OCEAN REEF ISLANDS

The Palms Beach Resort is an exclusive development located in Lots 41-45 of Island II in Ocean Reef Islands. The first man-made islands in Latin America.

Residents enjoy a beach paradise lifestyle, only minutes from the heart of Panama City, the economic and cultural hub of the region.



# Building 1 & 2



Building 1  
**Residence B**  
Ground floor



Oceanfront



Total area: 259 m<sup>2</sup>

2 bedrooms  
1 terrace  
2.5 bathrooms

Closed space: 127 m<sup>2</sup>  
Open space: 21 m<sup>2</sup>  
Patio: 111 m<sup>2</sup>



Building 2  
**Residence A**  
Ground floor



Oceanfront



Total area: 215 m<sup>2</sup>

2 bedrooms  
1 terrace  
2.5 bathrooms

Closed space: 135 m<sup>2</sup>  
Open space: 24 m<sup>2</sup>  
Patio: 56 m<sup>2</sup>



Building 2  
**Residence B**  
Ground floor



Oceanfront



Total area: 202 m<sup>2</sup>

2 bedrooms  
1 terrace  
2.5 bathrooms

Closed space: 127 m<sup>2</sup>  
Open space: 21 m<sup>2</sup>  
Patio: 55 m<sup>2</sup>



# Residence A

Level 100



Oceanfront



Total area: 177 m<sup>2</sup>

3 bedrooms  
1 terrace  
3.5 bathrooms

Closed space: 153 m<sup>2</sup>  
Open space: 24 m<sup>2</sup>



# Residence A

Level 200



Oceanfront



Total area: 205 m<sup>2</sup>

3 bedrooms  
2 terraces  
4 bathrooms

Closed space: 170 m<sup>2</sup>  
Open space: 34 m<sup>2</sup>



# Residence A

Level 300



Oceanfront



Total area: 196 m<sup>2</sup>

3 bedrooms  
1 terrace  
4 bathrooms

Closed space: 171 m<sup>2</sup>  
Open space: 25 m<sup>2</sup>



# Residence B

Level 100, 200, 300



Oceanfront

Total area: 147 m<sup>2</sup>

2 bedrooms  
1 terrace  
2.5 bathrooms

Closed space: 125 m<sup>2</sup>  
Open space: 21 m<sup>2</sup>



# Residence A

Level 400



Oceanfront



Total area: 199 m<sup>2</sup>

2 bedrooms  
1 terrace  
2.5 bathrooms

Closed space: 144 m<sup>2</sup>  
Open space: 54 m<sup>2</sup>



# Residence B

Level 400



Oceanfront

Total area: 169 m<sup>2</sup>

2 bedrooms  
1 terrace  
3 bathrooms

Closed space: 120 m<sup>2</sup>  
Open space: 49 m<sup>2</sup>



# Penthouse B

Level 500



Oceanfront



Level 500: 152 m<sup>2</sup>

2 bedrooms  
1 terrace  
2.5 bathrooms

Closed space: 137 m<sup>2</sup>  
Open space: 14 m<sup>2</sup>



# Penthouse B

Level 600



Oceanfront



Level 600: 148 m<sup>2</sup>

1 terrace  
1.5 bathrooms

Closed space: 75 m<sup>2</sup>  
Open space: 73 m<sup>2</sup>

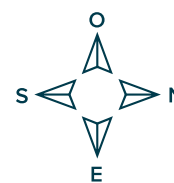
Residence total area: 300 m<sup>2</sup>



# Building 7



Building 7  
**Residence A**  
Level 200, 300, 400



Street View

Total area: 141 m<sup>2</sup>

2 bedrooms  
1 terrace  
2.5 bathrooms

Closed space: 120 m<sup>2</sup>  
Open space: 21 m<sup>2</sup>



Building 7  
**Penthouse A**  
Level 500



Street View

---

Total area: 142 m<sup>2</sup>

3.5 bedrooms  
4 bathrooms

Closed space: 133 m<sup>2</sup>  
Open space: 10 m<sup>2</sup>



Building 7  
**Penthouse A**  
Level 600



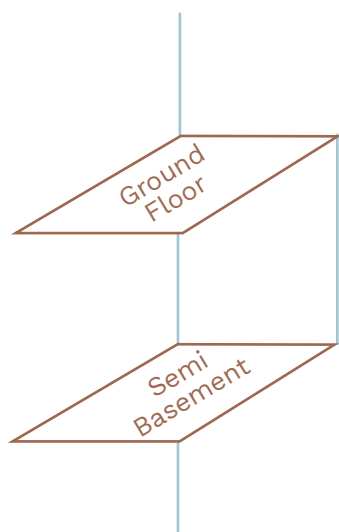
Street View

Total area: 155 m<sup>2</sup>

1 terrace  
1 guest bathroom

Closed space: 96 m<sup>2</sup>  
Open space: 58 m<sup>2</sup>





Semi Basement



\*All drawings and renderings are artistic concepts that the developer reserves the right to modify them.



# OCEAN REEF

Island Residences



WhatsApp Us



Mallol Design House, Calle 48 y Calle Uruguay, Bella Vista | +507.6218.2020  
www.TheAgencyREPanama.com | Panama@TheAgencyRE.com

Email Us

