



IPANEMA

Waterfront Residences

IPANEMARESIDENCES.COM

IPANEMA

Waterfront Residences

+1.402.539.5725  +507.6624.2290



IPANEMARESIDENCES.COM



YOUR NEW LIFE IN COSTA DEL ESTE

Imagine waking up every morning to the gentle buzz of the waves, **contemplating the blue immensity, from the comfort of your home.** Ipanema is the exclusive space that offers you **the opportunity to enjoy breathtaking sunsets, over the Pacific Ocean and its serenity,** creating a sense of calm and well-being beyond compare.

INSPIRED IN THE SEA, BUILT FOR THE CITY.

Additionally, being surrounded by luxuries and amenities adds a sophisticated touch to your lifestyle, allowing you **to enjoy unique experiences every day.**



*Note:

*Image is for illustrative purposes only and may not accurately represent the final product.



DEFINITELY UNREPEATABLE.

ARCHITECTURAL ICON AND CULTURAL SIGNIFICANCE.

The tower's attention to detail and architectural design ensures an exceptional living experience...

Inspired by the elegant sails of a sailboat, the renowned firm of **MALLOL ARQUITECTOS®** has created a masterpiece that blends seamlessly with its cosmopolitan coastal setting. The spirit of the design celebrates the fluidity of the ocean and pays tribute to Panama's rich maritime history. From every angle, residents will be captivated by the building's sleek lines and timeless charm, where modern luxury meets nautical allure. Rarely such "majestic" architecture is found in such a prominent location, guaranteeing **the ICONIC status of IPANEMA RESIDENCES in the region.**



IPANEMA

Waterfront Residences



* Note:
* Image is for illustrative purposes only and may not accurately represent the final product.

DISTINCTLY PARADISIACAL.

ALL YOUR DAYS LIKE IN A LUXURY RESORT.

Every day becomes an opportunity to enjoy the beauty of the surroundings, create unforgettable memories and experience a level of luxury and comfort that exceeds all expectations. The perfect combination of charm of an exclusive resort and the comfort of a high-elegance home, making every day an iconic experience.

Approximately 5000 m2 of social areas
Access to the sports areas of Costa del Mar
Private man-made beach of Costa del Mar

You will be able to relax by the pool overlooking the sea and enjoy exclusive sports areas to keep you fit and full of energy. In addition, you will have the opportunity to stroll along **the private beach of the project**, just a few steps from your new apartment. For your maximum comfort, IPANEMA will offer a shuttle service operating 24 hours a day, exclusively for our residents, which will take you to the main points of interest of Costa del Este.



***Note:**

* Image is for illustrative purposes only and may not accurately represent the final product.

IPANEMA

Waterfront Residences

AMENITIES THAT STAND OUT

You will be able to relax by the pool overlooking the sea and enjoy exclusive sports areas to keep you fit and full of energy. In addition, you will have the opportunity to stroll along the private beach of the project, just a few steps from your new apartment.



WELLNESS & SPORTS.

- Private man-made beach
- Wellness Center
- Spa
- Yoga
- TRX training
- Box and weights
- Spinning
- Olympic swimming lane
- Jacuzzi
- Aquatic Yoga
- Sea Lounge
- Running Track



SOCIAL & ENTERTAINMENT

- Club Area
- Bistro Flex Lounge
- Cinema
- Sports Bar
- BBQ Zone
- Fire Pits
- Outdoor Lounge



COSTA DEL MAR SPORTS AREAS

- Tennis court
- 2 soccer fields
- 2 basketball courts
- Playground for children



FAMILY SPACES

- Teens & TV Lounge
- Adults Lounge
- Kids Cove
- Recreative Room
- Kids Pool

*Note:

* Image is for illustrative purposes only and may not accurately represent the final product.

LUXURY EVERYDAY.

The Ipanema apartments offer an unparalleled experience, **with 1-to-3-bedroom options with serene finishes.** All with views of the Panama's sea and the beauty of being connected to it..

Its nautical finishes, such as wood textures and ocean-inspired colors, add an evocative touch that perfectly complements the Pacific views. **The combination of the sea breeze and nautical design creates a cozy and relaxing atmosphere,** allowing residents to enjoy the feeling of living in an oceanside retreat, while being close to the city.

THE PARADISE THAT BECOMES YOUR HOME.

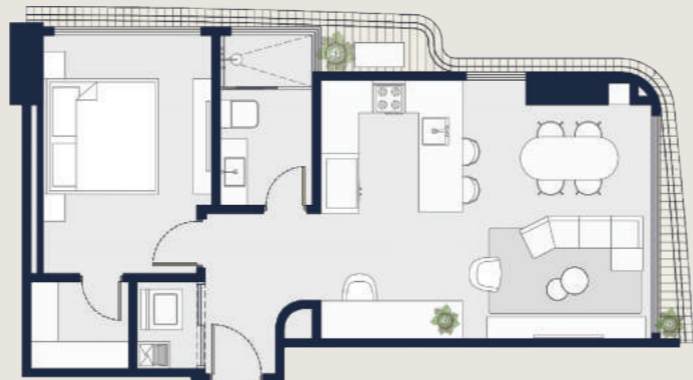
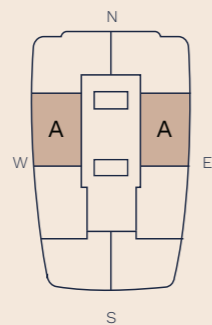
***Note:**

* Image is for illustrative purposes only and may not accurately represent the final product.



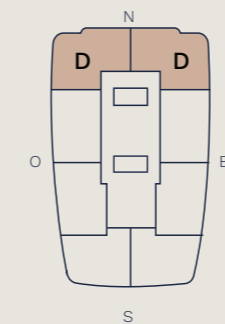
APARTAMENTO OLAS

TIPO A1
89 m²



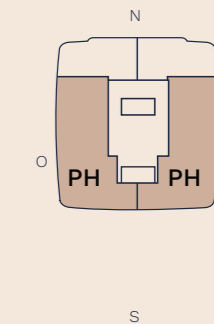
APARTAMENTO ATARDECER

TIPO D3
73 m²



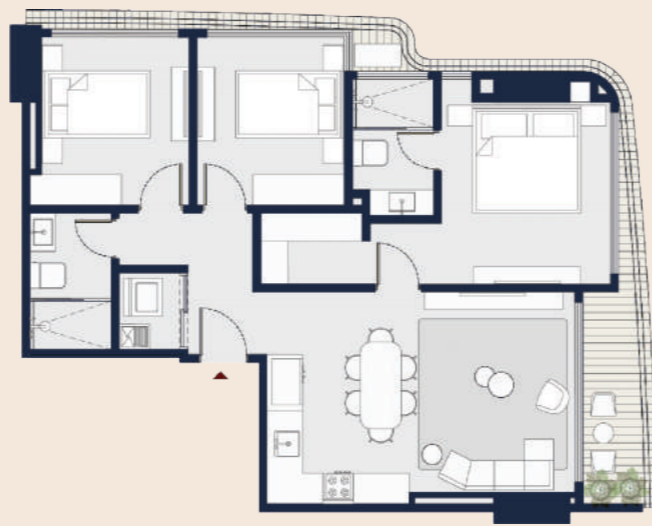
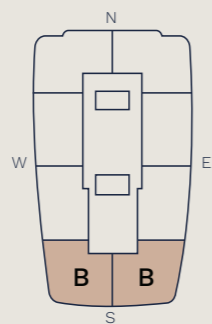
APARTAMENTO VELERO

TIPO PH
163 m²



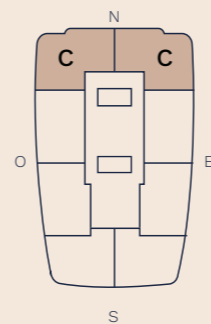
APARTAMENTO VIENTO

TIPO B1
100 m²



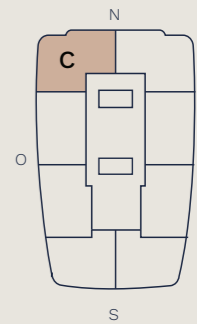
APARTAMENTO AMANECER

TIPO C1
100 m²



APARTAMENTO BRISA

TIPO C3
90 m² interiores
174 m² exterior



*The standard units may vary in size and distribution. Ask your sales consultant for more details.



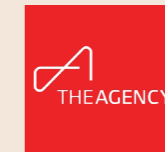
***Note:**

* Image is for illustrative purposes only and may not accurately represent the final product.

**DISTINCTLY
CONNECTED.**



IPANEMARESIDENCES.COM



WhatsApp Us



Mallol Design House, Calle 48 y Calle Uruguay, Bella Vista | +507.6218.2020
www.TheAgencyREPanama.com | Panama@TheAgencyRE.com

Email Us

