

ALLURE

AT PUNTA PACÍFICA





AN INTIMATE *Concept*
IN THE HEART OF
PUNTA PACÍFICA



ALLURE AT PUNTA PACÍFICA redefines the lifestyle in Panama with an elegant and disruptive presentation. An architectural proposal that integrates into the landscape of the area, complementing it in a subtle yet impactful manner.



ALLUREATPP.COM



*Concept*_____

NEAR TO *Everything*,
INCOMPARABLE WITH ITS
SURROUNDINGS



Unique Subtle Elegant

The residential project ALLURE AT PUNTA PACÍFICA consist of 1 tower that grant its owners the versatility of accessing all the comforts of the city within a tropical paradise.

The organic, flowing, soft, and asymmetrical shapes encourage finding similarities between its spaces and nature, which was the main inspiration for the design of ALLURE AT PUNTA PACÍFICA.



Location _____

PACIFIC OCEAN

FERRY LAS PERLAS

GRAND TOWER



FOODIE MARKET

PUNTA PACÍFICA

ST GRAND TOWER

GRAND PLAZA

PACIFIC VILLAGE

METRO PLUS PHARMACY

ST PUNTA CHIRIQUÍ

ST PUNTA CHIRIQUÍ

HIGHWAY SUR

TO MULTIPLAZA

ST PUNTA DARIÉN



REAL VIEW FROM THE PROJECT

Project _____



ALLURE
AT PUNTA PACIFICA

Residentes

Estacionamiento



ALLURE
AT PUNTA PACÍFICA



BUSINESS *Center*

14

An inspiring and collaborative environment for professionals
from all disciplines.



BIOPHILIC *Garden*

16

A unique and serene space where nature
and beauty come together in harmony.







GYM

Boost your energy, achieve your goals, and enjoy a motivating environment.

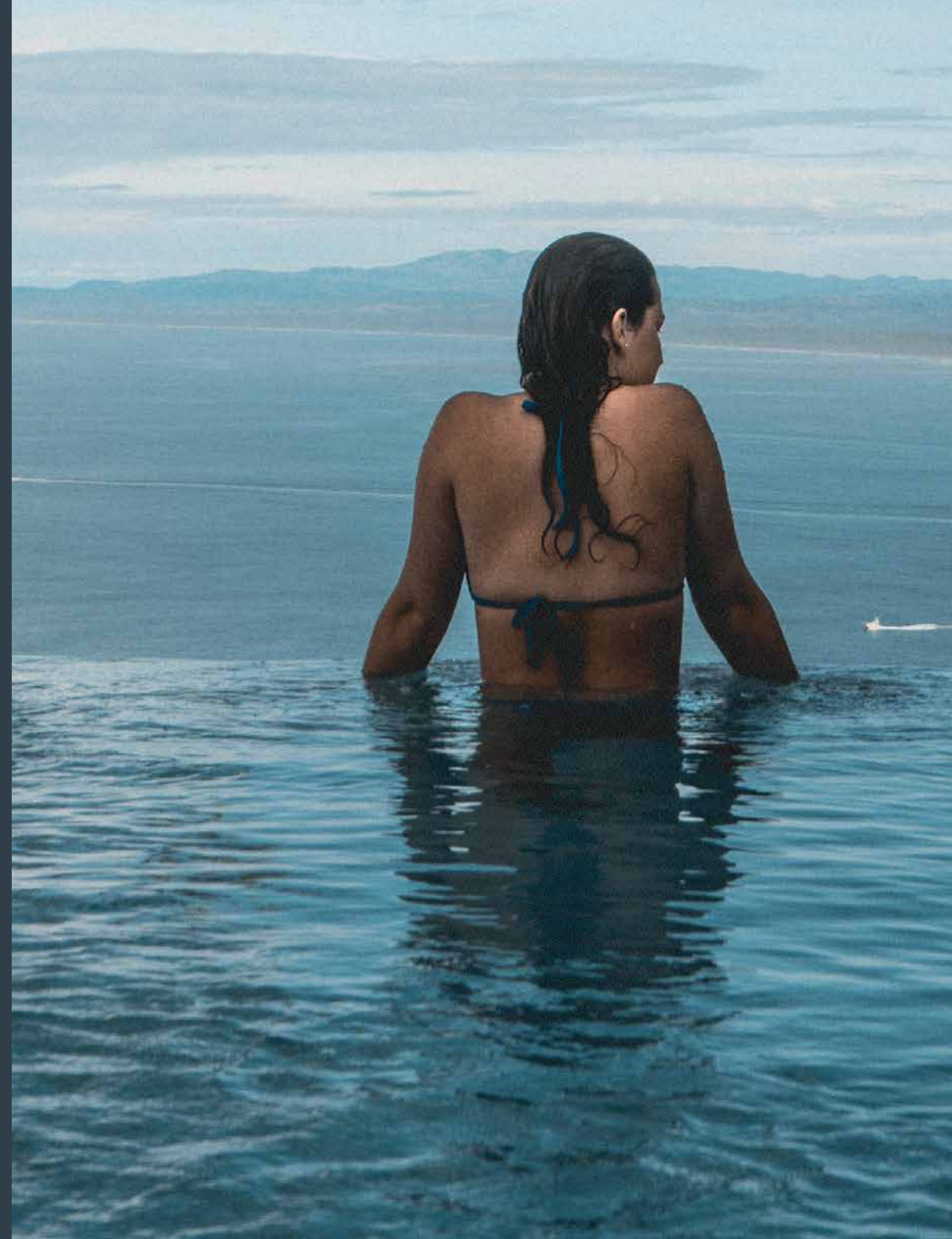
Bathroom
Locker Room
Massage Room



ROOFTOP *Pool*

20

With an elegant and avant-garde design, our pool invites you to immerse yourself in crystal-clear, refreshing waters while enjoying panoramic views.







SHOPPING *Center*

22

Customizable spaces that adapt to your needs.



CAVA

Coffee Bar

Floor Plans



◆ FOOTAGE
2,975.79ft²

◆ 3 BEDROOMS +
WALK IN CLOSET

◆ LIVING/DINING ROOM

◆ LAUNDRY

◆ DEN





◆ FOOTAGE
3,231.54ft²

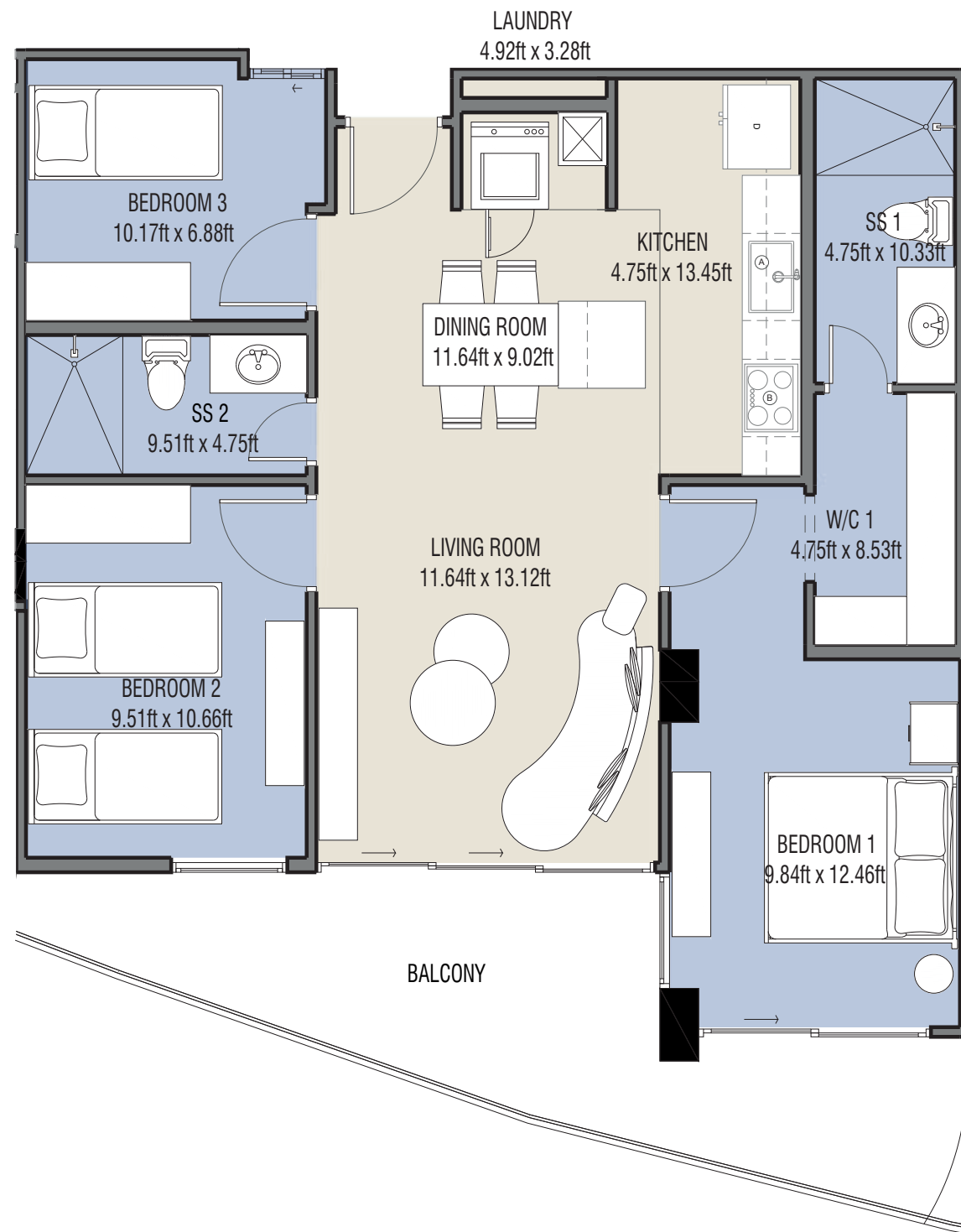
◆ 3 BEDROOMS +
WALK IN CLOSET

◆ LIVING/DINING ROOM

◆ LAUNDRY

◆ DEN





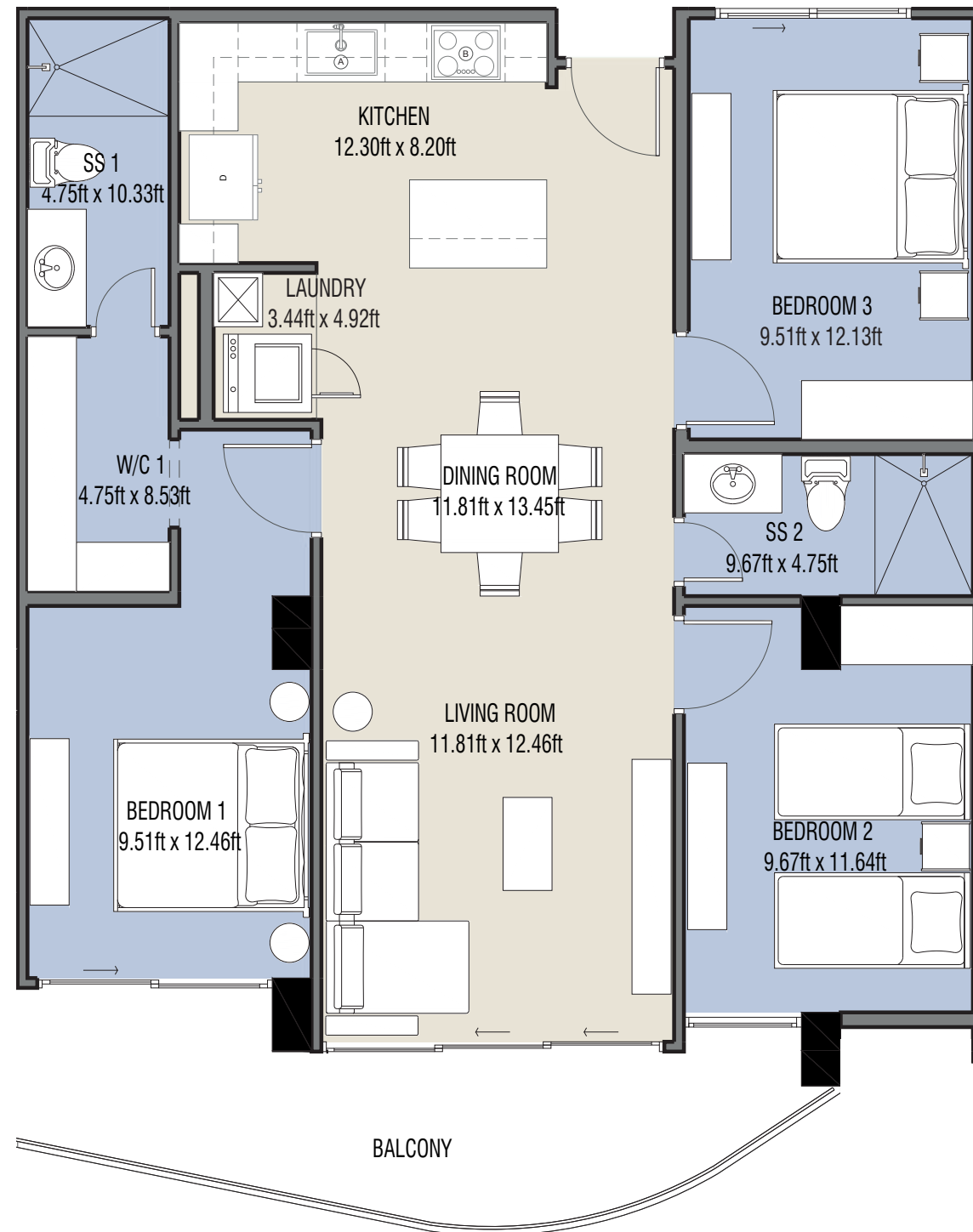
- ◆ FOOTAGE
1,136.88ft²

- ◆ 3 BEDROOMS +
WALK IN CLOSET

- ◆ LIVING/DINING ROOM

- ◆ LAUNDRY





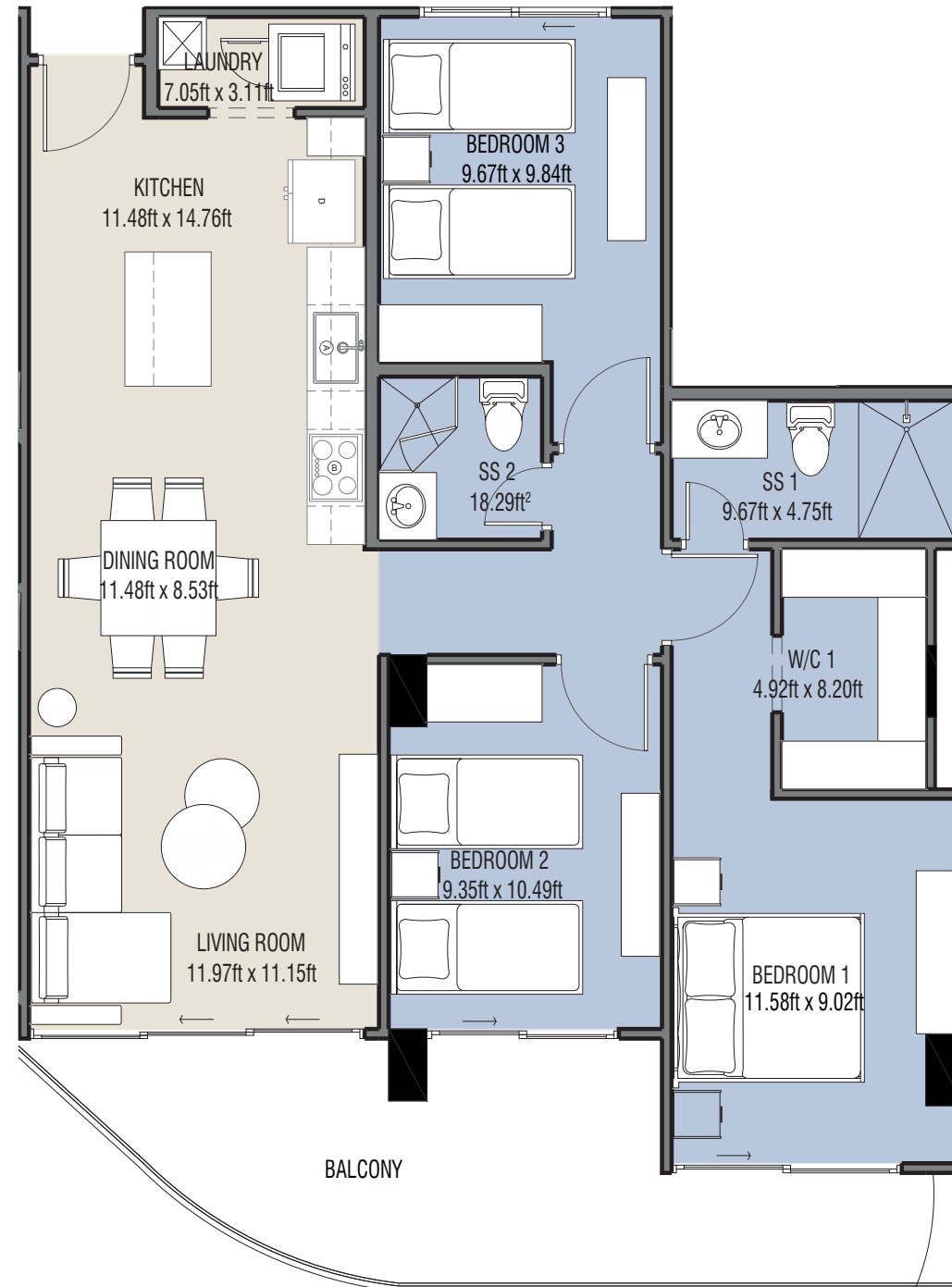
- ◆ FOOTAGE
1,266.37ft²

- ◆ 3 BEDROOMS +
WALK IN CLOSET

- ◆ LIVING/DINING ROOM

- ◆ LAUNDRY





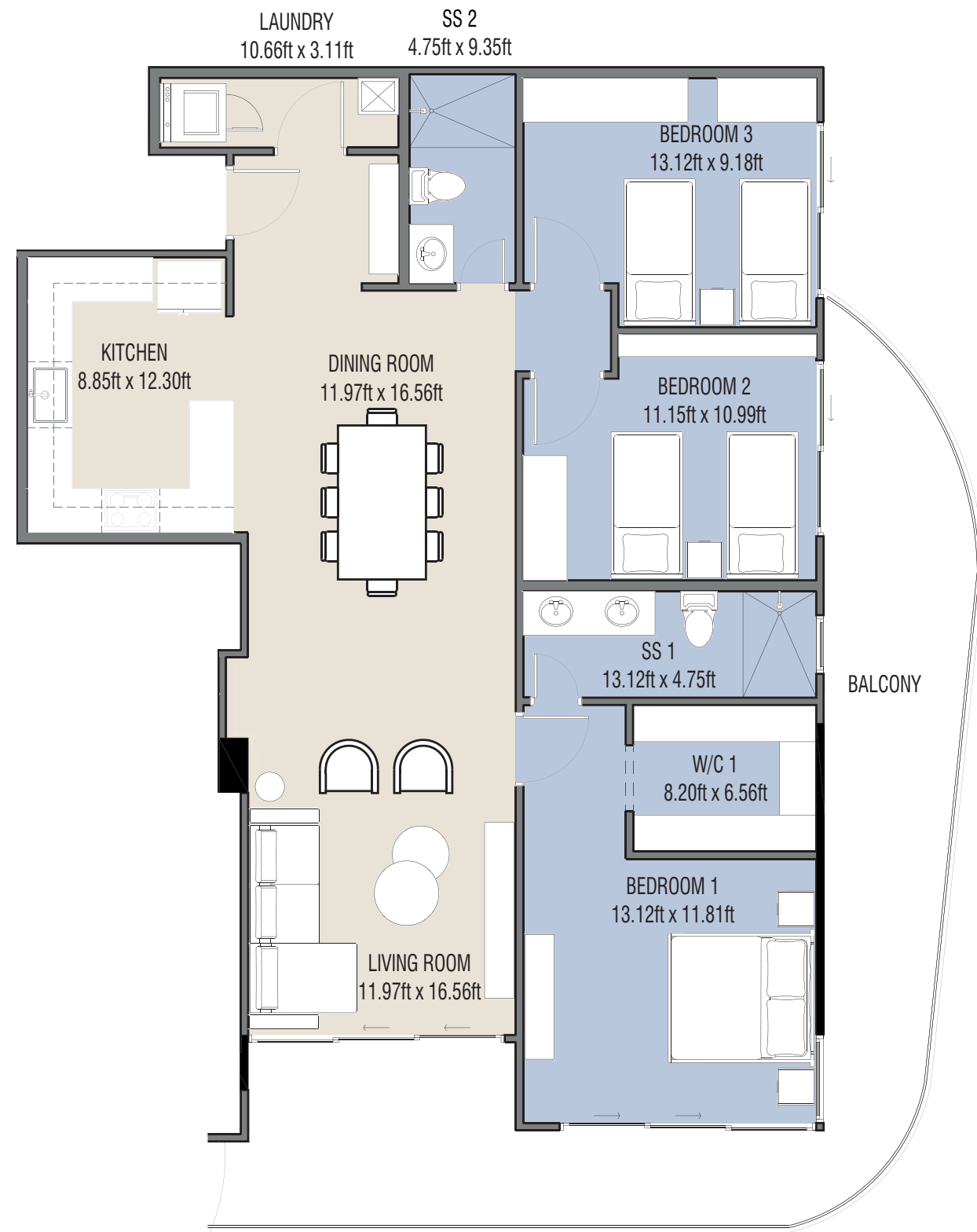
◆ FOOTAGE
1,247.53ft²

◆ 3 BEDROOMS +
WALK IN CLOSET

◆ LIVING/DINING ROOM

◆ LAUNDRY





- ◆ FOOTAGE
1,763.55ft²

- ◆ 3 BEDROOMS +
WALK IN CLOSET

- ◆ LIVING/DINING ROOM

- ◆ LAUNDRY

EMPORIUM

DEVELOPERS

With more than 18 years of experience in the development of real estate projects. We have the support of the most recognized construction companies in the country, who contribute to the achievement of our main objective: to build wonderful, aesthetic and functional spaces for the different stages of people's lives.

At Emporium, we develop and invest in the real estate industry in our country. This is how we have been able to build community over time and at the same time promote Panamanian employment, forming certified teams with extensive experience in various disciplines that help us to fulfill real estate projects for any type of need and from all areas.

CASIS MOCK
ARCHITECTS



ALLURE AT PUNTA
PACÍFICA *Redefines*
YOUR LIFESTYLE



Mallol Design House, Calle 48 y Calle Uruguay, Bella Vista | +507.6218.2020
www.TheAgencyREPanama.com | Panama@TheAgencyRE.com

WhatsApp Us



Email Us

