


The logo for Seascope features the word "Seascope" in a dark blue, elegant script font. A horizontal line with a central dot is positioned below the "Seascope" text.

Seascope

BEACH & WELLNESS RESORT

AT OCEAN REEF ISLANDS

A ZEN EXPERIENCE
AND A PRIVATE RESORT
OF ITS OWN...

A woman with dark hair is floating on her back in a swimming pool. She is wearing a white one-piece swimsuit and has her eyes closed, appearing to be in a state of relaxation or meditation. The water is clear blue with gentle ripples. A white pool edge is visible in the background. A semi-transparent teal box with white text is overlaid on the left side of the image.

A PLACE TO DISCONNECT,
A PLACE OF NO-MIND,
A PLACE TO EXPERIENCE
INNER STILLNESS...

An aerial view of a luxurious coastal resort. The resort features modern, multi-story buildings with glass facades and balconies, situated on a peninsula. A large swimming pool with a curved edge is surrounded by lounge chairs and palm trees. A marina with several yachts is visible in the background. The resort is bordered by a rocky breakwater, and waves are crashing against it. A large yacht is seen in the foreground, moving through the water. The overall atmosphere is serene and exclusive.

YOUR OWN PRIVATE *sanctuary,*
YOUR REFUGE FROM THE CITY.

A PLACE TO KEEP YOU BALANCED,
A PLACE TO BREATHE FRESH AIR,
A PLACE TO CONNECT WITH NATURE,
A PLACE TO LOSE PERSPECTIVE OF THE EVERYDAY...



Location

SEASCAPE IS LOCATED IN LOTS 30, 31, 32 AND 33 OF ISLAND II OF THE OCEAN REEF PROJECT. ENCOMPASSING A WIDE SPECTRUM OF ACTIVITIES, OCEAN REEF ISLANDS IS MINUTES AWAY FROM PREMIER SHOPPING, EXCITING NIGHTLIFE, FINE DINING, SPECTACULAR SCUBA DIVING, UNMATCHED DEEP SEA FISHING AND WORLD CLASS SPA AND HEALTH SERVICES, YET LIES IN A SHELTERED HAVEN OF TRANQUILITY AND BEAUTY.



Seascape



Residences

THE PROJECT, DESIGNED BY THE PRESTIGIOUS ARCHITECTURAL FIRM
MALLOL, FEATURES 2 AND 3 BEDROOM APARTMENTS WITH A SPECTACULAR
VIEW TO THE OCEAN AND ACCESS TO A PRIVATE BEACH AREA.



3 BEDROOMS APPROX 2551.05 SQ FT.



3 BEDROOMS APPROX 2551.05 SQ FT.



2 BEDROOMS - 1,680 SQ FT.



Amenities



POOL AREA WITH BEACHFRONT ACCESS



BEACH WITH HAMMOCKS AND RELAXATION AREA



GYM AND TREATMENT ROOM



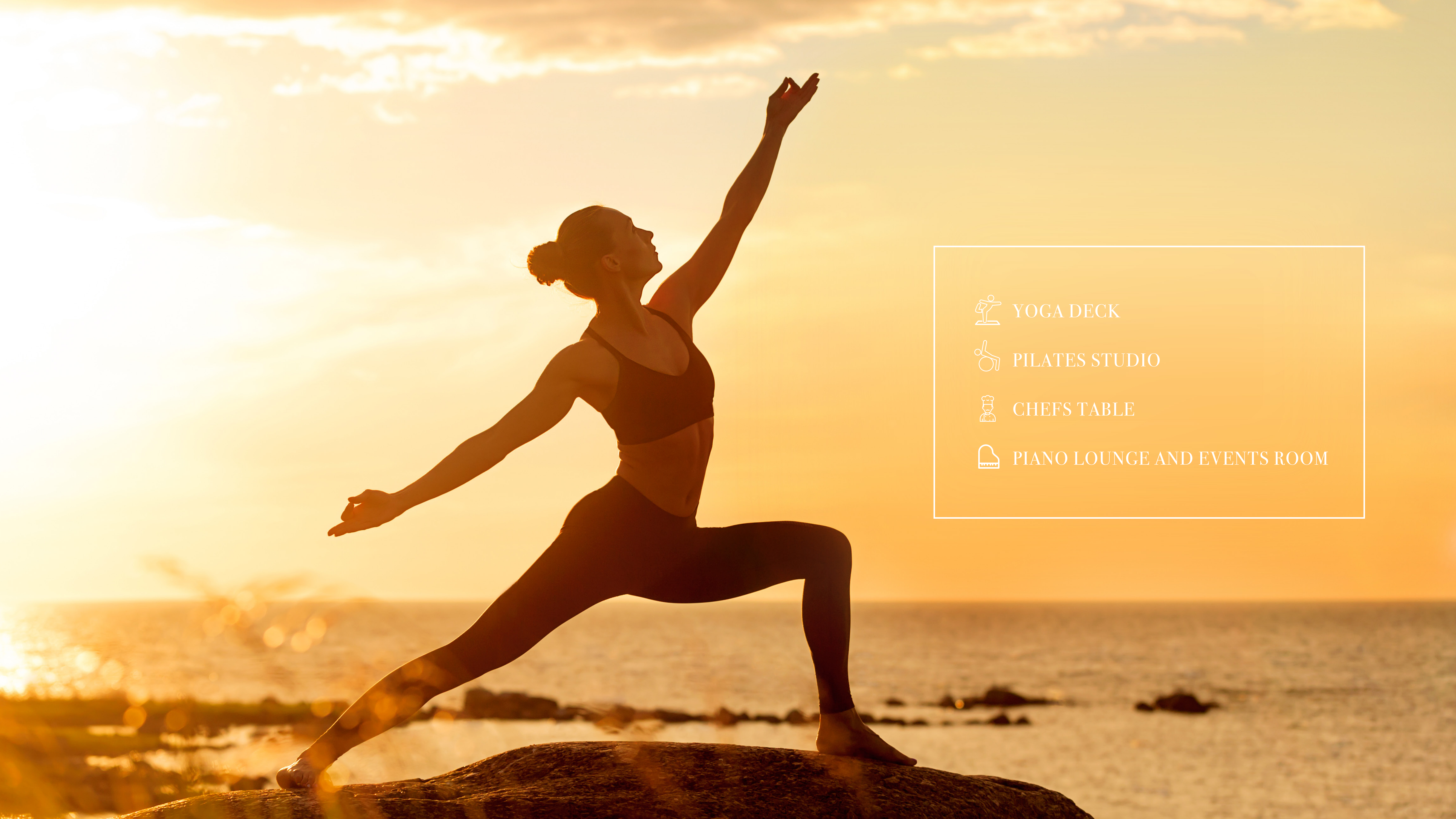
LAP POOL



WHIRLPOOL



OUTDOOR YOGA STUDIO



YOGA DECK



PILATES STUDIO



CHEFS TABLE



PIANO LOUNGE AND EVENTS ROOM



PRIVATE WINE CELLAR



CONCIERGE AND WELLNESS SERVICES



SHARED WORKING SPACE

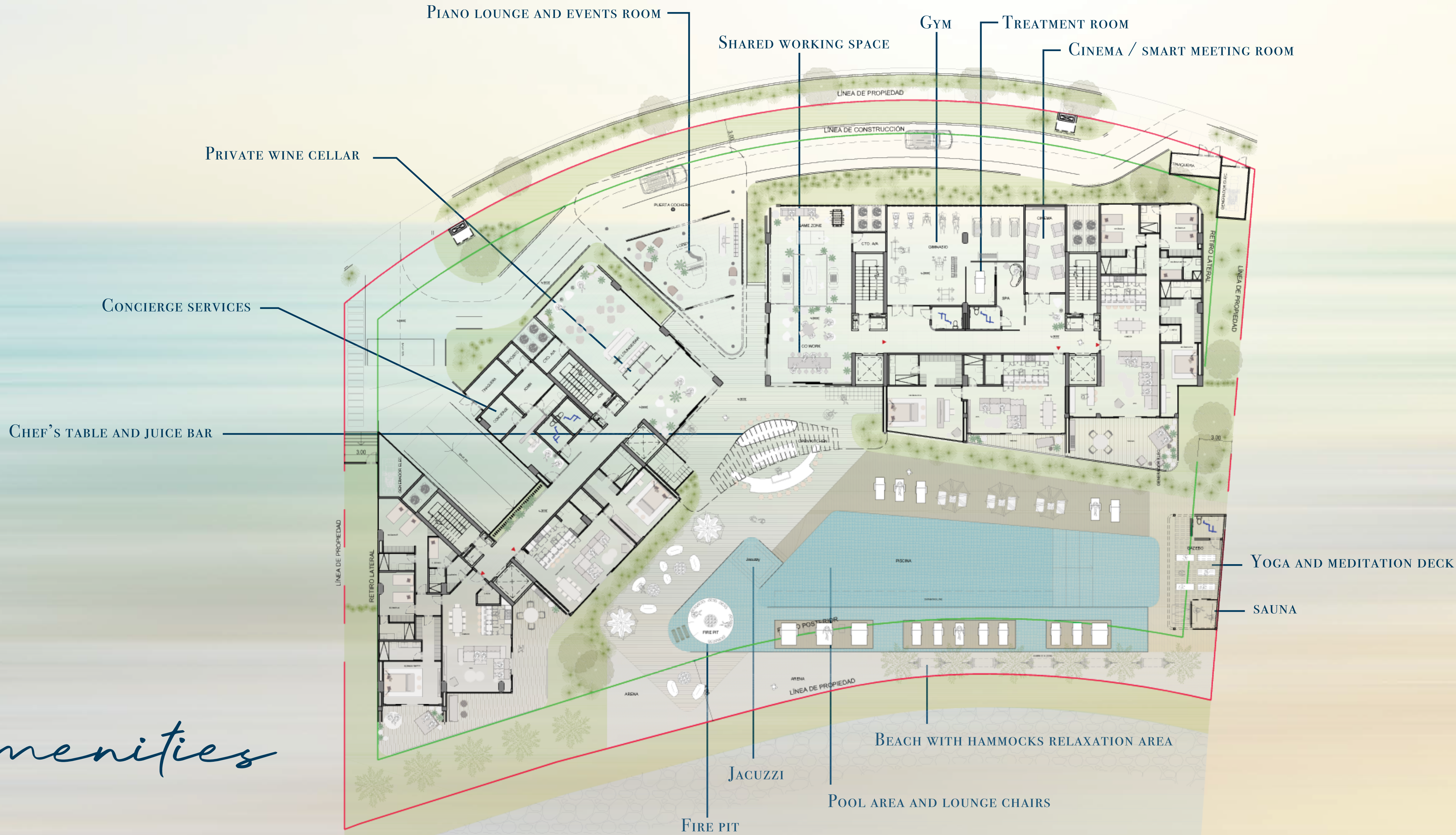


CINEMA / SMART MEETING ROOM



PIANO LOUNGE AND EVENTS ROOM

Amenities





A la Carte
services upon
request

USER PAY

IN-RESIDENCE DINING AND
event catering



IN-RESIDENCE
spa services



IN-RESIDENCES LAUNDRY &
dry cleaning





HOUSEKEEPING



IN-RESIDENCES
gardening services



HELICOPTER
arrangements



RESIDENCE MAINTENANCE AND
repair services



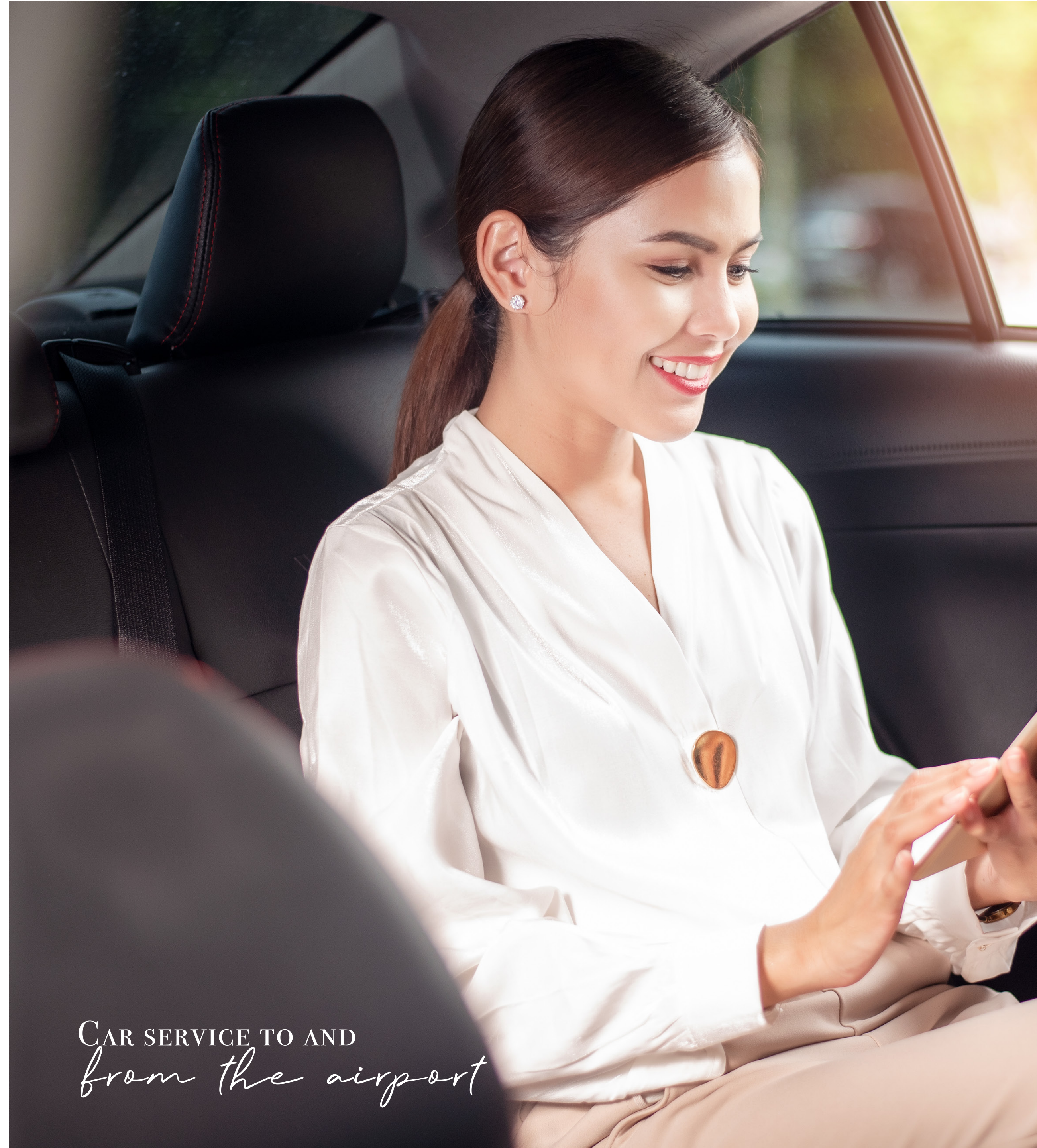
PRIVATE CHARTER SERVICES
to enjoy the Pearl Islands



GROCERY
provisioning



BOAT
charter



Disconnect
TO CONNECT



Ocean Reef



OCEAN REEF ISLANDS IS THE **FIRST AND ONLY MAN BUILT ISLAND IN THE PACIFIC OCEAN.** RESIDENTS ENJOY AN ISLAND LIFESTYLE, ONLY MINUTES FROM THE HEART OF PANAMA CITY, THE ECONOMIC AND CULTURAL HUB OF THE REGION.

A COMPLETELY DIFFERENT ECOSYSTEM WITH LOW DENSITY AND ONE-OF-A-KIND PRIVATE RESIDENCES, IT’S UNLIKE WHAT YOU EXPERIENCE ANYWHERE ELSE IN LATIN AMERICA.

A WORLD CLASS MARINA JUST STEPS AWAY FROM THE CITY, WHICH WILL OFFER 200 SLIPS FOR YACHTS RANGING FROM 40 TO 200 FEET. A MARINE AND BOAT SUPPLY STORE, FUELING STATION, SLIP RENTAL PROGRAM, SCUBA DIVING TRIPS, AND YACHT CHARTER SERVICE WILL BE AVAILABLE AT THE YACHT CLUB. THE MARINA IS UNDER CONSTRUCTION AND WILL OPEN LAST SEMESTER OF 2019.

OCEAN REEF ISLANDS IS THE JEWEL OF PUNTA PACIFICA, THE MOST AFFLUENT NEIGHBORHOOD IN PANAMA CITY. CONNECTED TO THE MAINLAND BY A BRIDGE OF APPROX. 160 METERS AND OFFERS THE POSSIBILITY OF BEING AWAY BUT ALWAYS CONNECTED IF YOU WISH.

IT HAS A PRIVILEGED LOCATION SINCE IT IS CONNECTED THE MOST IMPORTANT AREAS OF THE CITY WITH A DIRECT ENTRY AND EXIT FROM THE SOUTH CORRIDOR AND MULTIPLE ACCESS ROADS, JUST 5 MINUTES FROM SUPERMARKETS, SHOPPING CENTERS, RESTAURANTS, HOSPITALS, BANKING CENTER AND BUSINESS.

OCEAN REEF ISLANDS IS THE PREFERRED MARINA FOR YACHTS IN PANAMA BECAUSE OF ITS PROXIMITY TO THE CITY AND THE MOST SPECTACULAR BEACHES OF THE PACIFIC OCEAN. LESS THAN 30 NAUTICAL MILES FROM OCEAN REEF ISLANDS YOU CAN FIND EXCELLENT FISHING AND THE PRISTINE WATERS OF THE ARCHIPELAGO LAS PERLAS.



 PRIVATE RESIDENTIAL MARINA

 YACHT CLUB

 POOL AREA

 RESTAURANT

 BAR AND LOUNGE

 BARBECUE AREA

 GYM

 WATER SPORTS CENTRE

 CONVENIENCE STORE

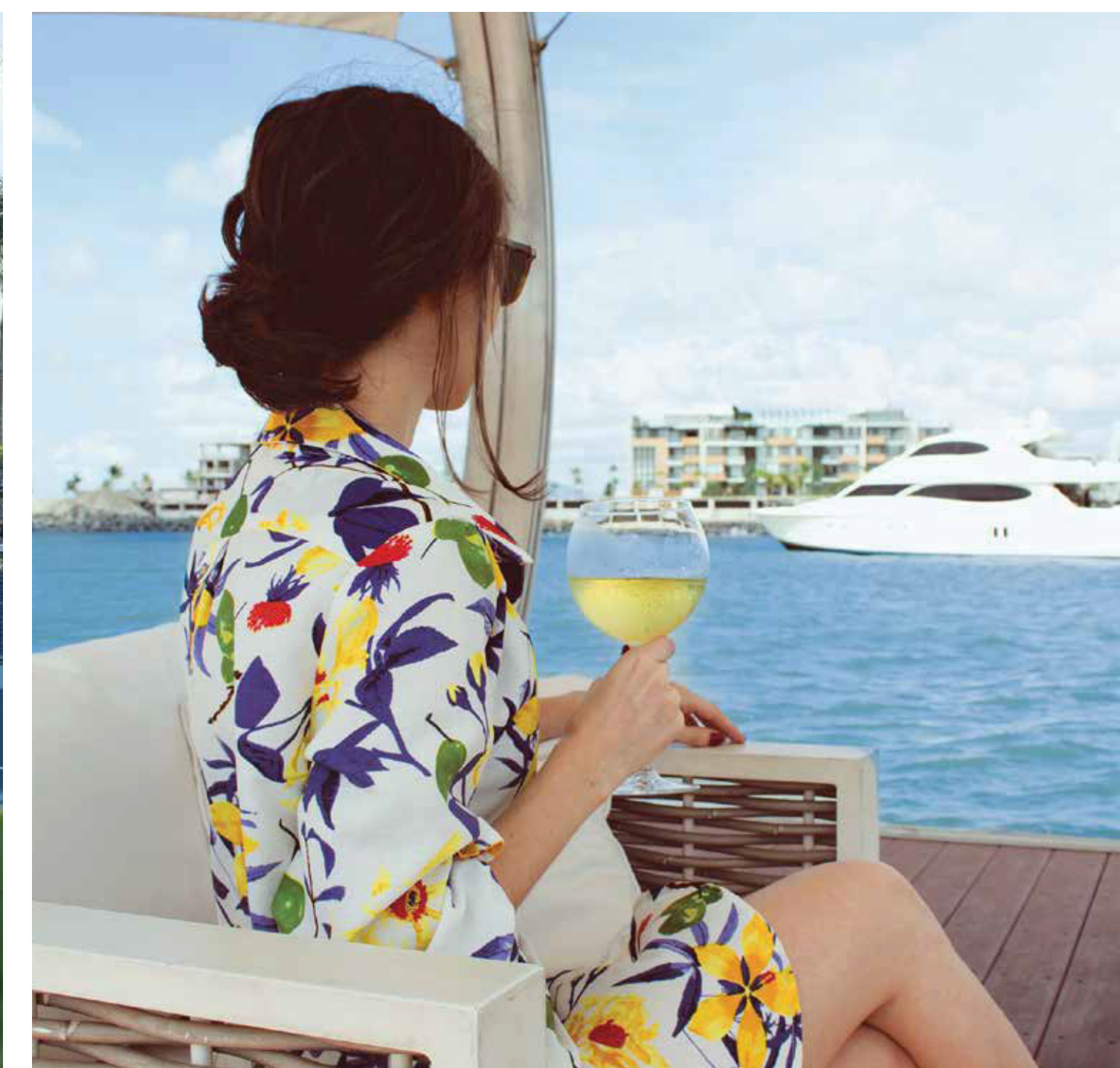
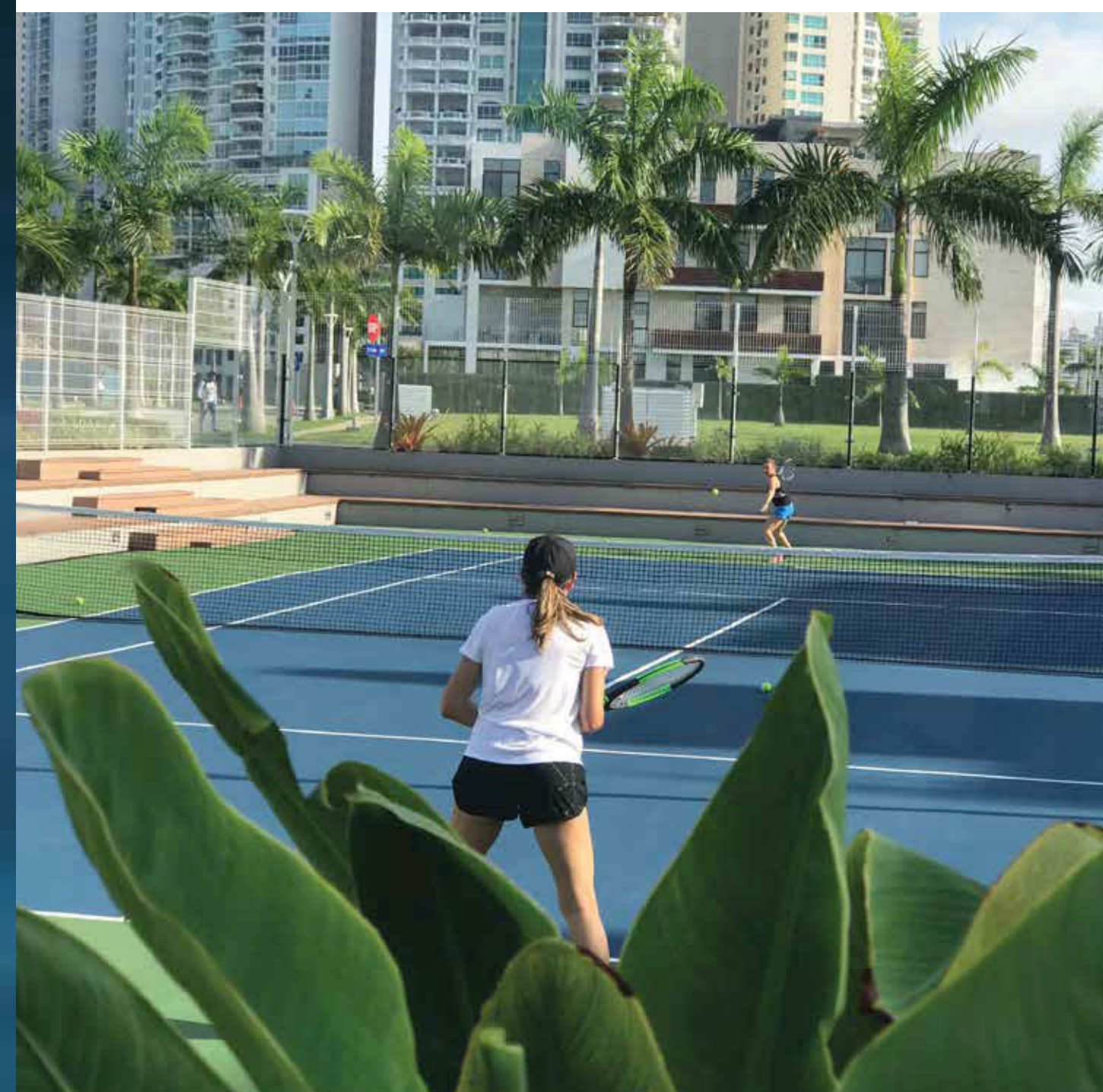
 KID'S PLAY AREA

 PARKS AND URBAN CENTER

 TENNIS COURT

 MULTIPURPOSE COURT (BASKETBALL,
VOLLEYBALL, SOCCER AND OTHER)

 PADDLE TENNIS COURT



WHY OWN A HOME IN OCEAN REEF ISLANDS. WHAT MAKES IT SO *Special*?

ITS GEOGRAPHICAL POSITION



THE ONLY PRIVATE ISLANDS LOCATED IN THE CENTER OF PANAMA'S BAY, ONLY STEPS AWAY FROM THE HEART OF THE CITY AND SURROUNDED BY THE BEST HOSPITALS, RESTAURANTS, MALLS AMONG OTHERS.

FOR THE QUALITY OF LIFE



NO ONE IN PANAMA CITY LIVES LIKE THIS, LIVING IN THE BEACH WITH THE OCEAN AT YOUR FEET EVERY DAY OF THE WEEK. THIS IS ANOTHER WORLD, A COMPLETELY DIFFERENT ECOSYSTEM WHERE YOU LOOK AT THE CITY FROM ANOTHER ANGLE, WHERE YOU CAN'T LISTEN OR FEEL IT... WHERE YOU BREATHE FRESH AIR, LISTENING TO THE SOUND OF THE SEA AND THE BIRDS THAT SURROUND IT.

FOR ITS EXCLUSIVITY



ALL OF THE PROPERTIES IN FRONT OF THE OCEAN IN PANAMA ARE HIGH DENSITY PROPERTIES WITHOUT ACCESS TO THE SEA. THIS IS THE ONLY PROJECT, NOT ONLY IN PANAMA BUT IN CENTRAL AMERICA THAT OFFERS THE POSSIBILITY OF HAVING A HOUSE OR A PRIVATE PROJECT OF LOW DENSITY AMONG FRIENDS, FACING THE SEA AND HAVING THE POSSIBILITY OF HAVING A PRIVATE PIER IN FRONT OF YOUR RESIDENCE.



IT IS THE ONLY PROJECT THAT OFFERS ITS OWNERS THE POSSIBILITY TO **CUSTOMIZE THEIR RESIDENCES** ON THE BASIS OF THEIR NEEDS.

FOR ITS AMENITIES



IT OFFERS A NUMBER OF AMENITIES WITHIN WHICH WE CAN MENTION A TENNIS COURT, MULTIPURPOSE COURT, SQUASH COURT, PADDLE TENNIS COURT, PLAYGROUND, CENTRAL URBAN CONCEPT, HELIPORTS, AMONG OTHERS... THE MOST IMPORTANT ADDED VALUE FROM OCEAN REEF MARINA, A PRIVATE RESIDENTIAL MARINA LOCATED IN THE CENTER OF THIS SPECIAL DEVELOPMENT, MAKING IT THE ONLY MARINA IN DOWNTOWN PANAMA CITY FOR THE EXCLUSIVE USE OF ITS OWNERS AND MEMBERS. BECAUSE IT IS UNIQUE, THERE IS NO SIMILAR PROJECT COMPARABLE IN THE WHOLE OF CENTRAL AMERICA, SO WHAT HAS BEEN LIMITED AND IN TURN GUARANTEES EXCLUSIVITY AND THEREFORE AN IMPORTANT APPRECIATION.



PUNTA PAITILLA

F&F TOWER

MULTIPLAZA

PUNTA PACÍFICA

JW MARRIOTT

ATLAPA CONVENTION
CENTER

◀ AVE. BALBOA

ISLA I

ISLA II

COSTA DEL ESTE ▶

PARS

Always Guiding Your Way

PARA MÁS INFORMACIÓN:
VICTORIA LEVITAM +507 6218 2020
VLEVITAM@PARS.COM.PA
PARS.COM.PA

